

SIRUBA®

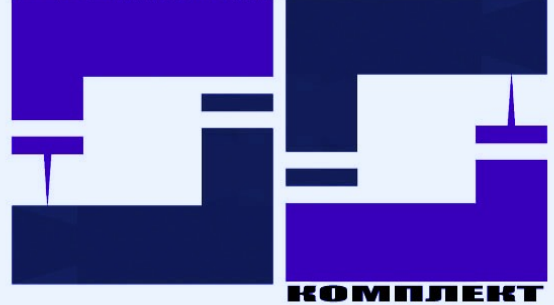
銀箭牌工業用縫紉機

INDUSTRIAL SEWING MACHINE

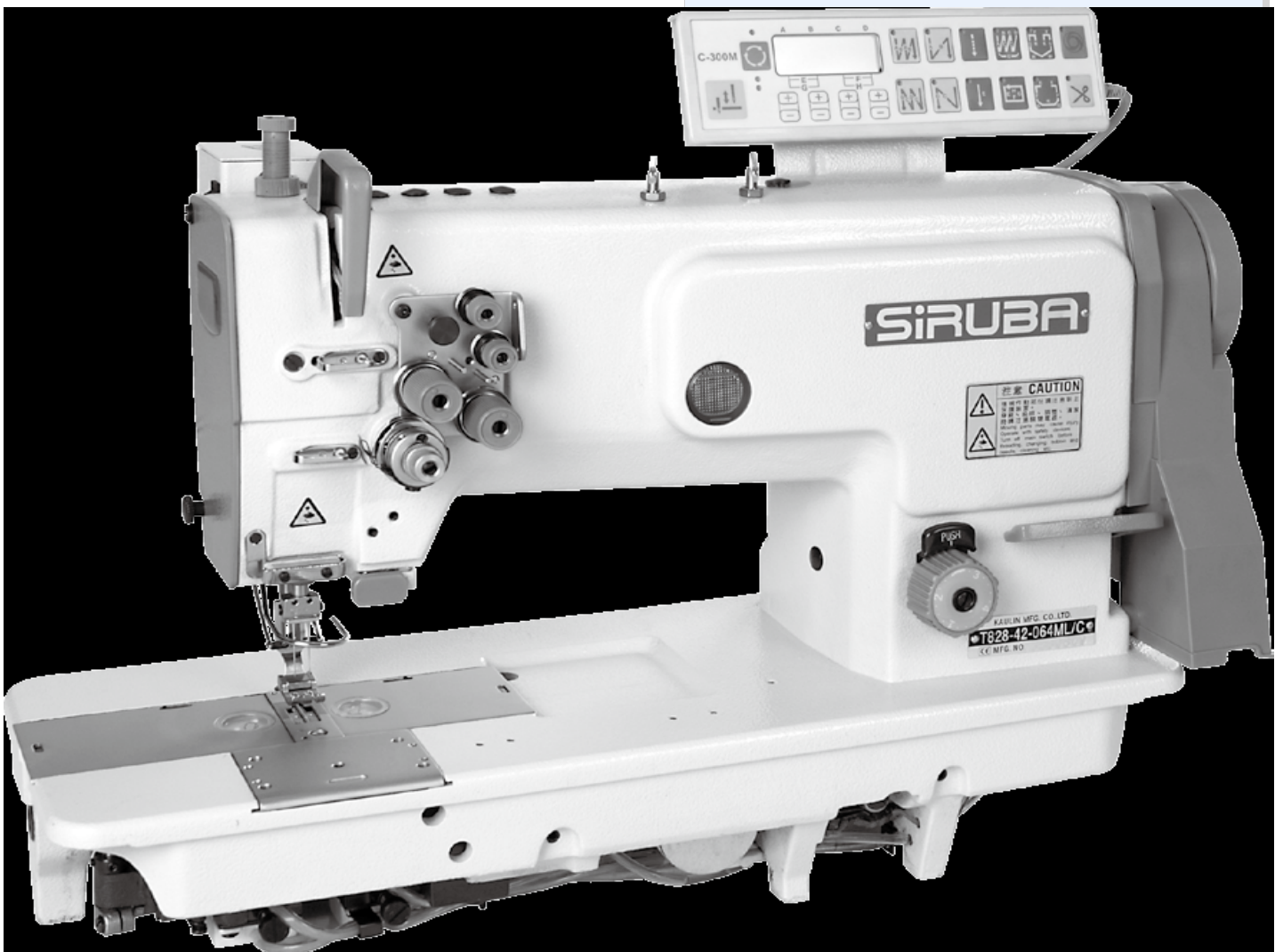
T828

零件圖 PARTS LIST

ШВЕЙПРОМ



КОМПЛЕКТ



Данная информация для
Вас предоставлена
ООО "ШВЕЙПРОМКОМПЛЕКТ"
т/ф (499) 2592598 г.Москва
www.shveiprom.com
2592598@mail.ru



高林股份有限公司
KAULIN MFG. CO., LTD.

									
MODEL	OPERATING PANEL	SUB-CLASS	NEEDLE PLATE	FEED DOG	NEEDLE CLAMP	PRESSER FOOT	HOOK	BOBBIN	NEEDLE
機 型	操作盒	規 格	針 板	下送具	針 釗	押 具	旋 梭	梭 子	針 號
T828-42-032ML		1/8" (3.2)	E734	D734/P	M734	P734/S	G161	G307	DPX5#14
T828-42-048ML		3/16" (4.8)	E736	D736/P	M736	P736/S	G161	G307	DPX5#14
T828-42-064ML		1/4" (6.4)	E730	D730/P	M730	P730/S	G161	G307	DPX5#14
T828-42-032M		1/8" (3.2)	E734	D734/P	M734	P734/S	G162-A (G162+G406)	G307	DPX5#14
T828-42-048M		3/16" (4.8)	E736	D736/P	M736	P736/S	G162-A (G162+G406)	G307	DPX5#14
T828-42-064M		1/4" (6.4)	E730	D730/P	M730	P730/S	G162-A (G162+G406)	G307	DPX5#14
T828-42-032HL		1/8" (3.2)	E762	D734/P	M734	P734/S	G167	G307	DPX5#22
T828-42-048HL		3/16" (4.8)	E761	D736Q	M736	P736/S	G167	G307	DPX5#22
T828-42-064HL		1/4" (6.4)	E760	D730Q	M730	P730/S	G167	G307	DPX5#22
T828-42-032H		1/8" (3.2)	E762	D734/P	M734	P734/S	G162-A (G162+G406)	G307	DPX5#22
T828-42-048H		3/16" (4.8)	E761	D736Q	M736	P736/S	G162-A (G162+G406)	G307	DPX5#22
T828-42-064H		1/4" (6.4)	E760	D730Q	M730	P730/S	G162-A (G162+G406)	G307	DPX5#22
T828-42-032ML/C	C300M-A2	1/8" (3.2)	E754-A	D754	M734	P754/S	G163	G307	DPX5#14
T828-42-048ML/C	C300M-A2	3/16" (4.8)	E766-A	D766	M736	P766/S	G163	G307	DPX5#14
T828-42-064ML/C	C300M-A2	1/4" (6.4)	E745-A	D745	M730	P745/S	G163	G307	DPX5#14
T828-42-032M/C	C300M-A2	1/8" (3.2)	E754-A	D754	M734	P754/S	G164-A (G164+G406)	G307	DPX5#14
T828-42-048M/C	C300M-A2	3/16" (4.8)	E766-A	D766	M736	P766/S	G164-A (G164+G406)	G307	DPX5#14
T828-42-064M/C	C300M-A2	1/4" (6.4)	E745-A	D745	M730	P745/S	G164-A (G164+G406)	G307	DPX5#14

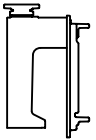



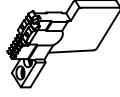
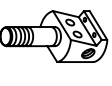
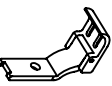
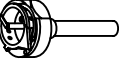


規格件表 CONVERSION CHART

									
MODEL	OPERATING PANEL	SUB-CLASS	NEEDLE PLATE	FEED DOG	NEEDLE CLAMP	PRESSER FOOT	HOOK	BOBBIN	NEEDLE
機 型	操作盒	規 格	針 板	下送具	針 釧	押 具	旋 梭	梭 子	針 號
T828-42-032HL/C	C300M-A2	1/8" (3.2)	E788-A	D788D	M734	P754/S	G163	G307	DPX5#22
T828-42-048HL/C	C300M-A2	3/16" (4.8)	E787-A	D787D	M736	P766/S	G163	G307	DPX5#22
T828-42-064HL/C	C300M-A2	1/4" (6.4)	E786-A	D786D	M730	P745/S	G163	G307	DPX5#22
T828-42-032H/C	C300M-A2	1/8" (3.2)	E788-A	D788D	M734	P754/S	G164-A (G164+G406)	G307	DPX5#22
T828-42-048H/C	C300M-A2	3/16" (4.8)	E787-A	D787D	M736	P766/S	G164-A (G164+G406)	G307	DPX5#22
T828-42-064H/C	C300M-A2	1/4" (6.4)	E786-A	D786D	M730	P745/S	G164-A (G164+G406)	G307	DPX5#22
T828-42-040VL/C	C300M-A2	5/32" (4.0)	E755P-A	D755P	M735P-E	P775P	G163	G307	DPX5#14
T828-42-048VL/C	C300M-A2	3/16" (4.8)	E766P-A	D766P	M766P-E	P766P	G163	G307	DPX5#14
T828-42-127KL/C	C301-A	1/2" (12.7)	E763-A	D763	M763	P763	G163	G307	DPX5#14
T828-45-032M		1/8" (3.2)	E762	D734/P	M0032R M0032L	P734/S	G169-A (G169+G409)	G307	DPX5#14
T828-45-048M		3/16" (4.8)	E761	D736/P	M0048R M0048L	P736/S	G169-A (G169+G409)	G307	DPX5#14
T828-45-064M		1/4" (6.4)	E760	D730/P	M0064R M0064L	P730/S	G169-A (G169+G409)	G307	DPX5#14
T828-45-032H		1/8" (3.2)	E762	D734/P	M0032R M0032L	P734/S	G169-A (G169+G409)	G307	DPX5#22
T828-45-048H		3/16" (4.8)	E761	D736Q	M0048R M0048L	P736/S	G169-A (G169+G409)	G307	DPX5#22
T828-45-064H		1/4" (6.4)	E760	D730Q	M0064R M0064L	P730/S	G169-A (G169+G409)	G307	DPX5#22
T828-45-032M/C	C300M-A2	1/8" (3.2)	E788-A	D754	M0032R M0032L	P754/S	G170-A (G170+G410)	G307	DPX5#14
T828-45-048M/C	C300M-A2	3/16" (4.8)	E787-A	D766	M0048R M0048L	P766/S	G170-A (G170+G410)	G307	DPX5#14
T828-45-064M/C	C300M-A2	1/4" (6.4)	E786-A	D745	M0064R M0064L	P745/S	G170-A (G170+G410)	G307	DPX5#14

									
MODEL	OPERATING PANEL	SUB-CLASS	NEEDLE PLATE	FEED DOG	NEEDLE CLAMP	PRESSER FOOT	HOOK	BOBBIN	NEEDLE
機 型	操作盒	規 格	針 板	下送具	針 釧	押 具	旋 梭	梭 子	針 號
T828-45-032H/C	C300M-A2	1/8" (3.2)	E788-A	D788D	M0032R M0032L	P754/S	G170-A (G170+G410)	G307	DPX5#22
T828-45-048H/C	C300M-A2	3/16" (4.8)	E787-A	D787D	M0048R M0048L	P766/S	G170-A (G170+G410)	G307	DPX5#22
T828-45-064H/C	C300M-A2	1/4" (6.4)	E786-A	D786D	M0064R M0064L	P745/S	G170-A (G170+G410)	G307	DPX5#22
T828-47-032LL		1/8" (3.2)	E791	D791	M734	P791/S	G161	G307	DPX5#11
T828-47-048LL		3/16" (4.8)	E790	D790	M736	P790/S	G161	G307	DPX5#11
T828-47-064LL		1/4" (6.4)	E789	D789	M730	P789/S	G161	G307	DPX5#11
T828-47-032L		1/8" (3.2)	E791	D791	M734	P791/S	G162-A (G162+G406)	G307	DPX5#11
T828-47-048L		3/16" (4.8)	E790	D790	M736	P790/S	G162-A (G162+G406)	G307	DPX5#11
T828-47-064L		1/4" (6.4)	E789	D789	M730	P789/S	G162-A (G162+G406)	G307	DPX5#11
T828-47-032LL/C	C300M-A2	1/8" (3.2)	E794-A	D794	M734	P791A	G163	G307	DPX5#11
T828-47-048LL/C	C300M-A2	3/16" (4.8)	E793-A	D793	M736	P790A	G163	G307	DPX5#11
T828-47-064LL/C	C300M-A2	1/4" (6.4)	E792-A	D792	M730	P789A	G163	G307	DPX5#11
T828-47-032L/C	C300M-A2	1/8" (3.2)	E794-A	D794	M734	P791A	G164-A (G164+G406)	G307	DPX5#11
T828-47-048L/C	C300M-A2	3/16" (4.8)	E793-A	D793	M736	P790A	G164-A (G164+G406)	G307	DPX5#11
T828-47-064L/C	C300M-A2	1/4" (6.4)	E792-A	D792	M730	P789A	G164-A (G164+G406)	G307	DPX5#11
T828-48-032L		1/8" (3.2)	E791	D791	M0032R M0032L	P791/S	G169-A (G169+G409)	G307	DPX5#11
T828-48-048L		3/16" (4.8)	E790	D790	M0048R M0048L	P790/S	G169-A (G169+G409)	G307	DPX5#11
T828-48-064L		1/4" (6.4)	E789	D789	M0064R M0064L	P789/S	G169-A (G169+G409)	G307	DPX5#11

規格件表 CONVERSION CHART

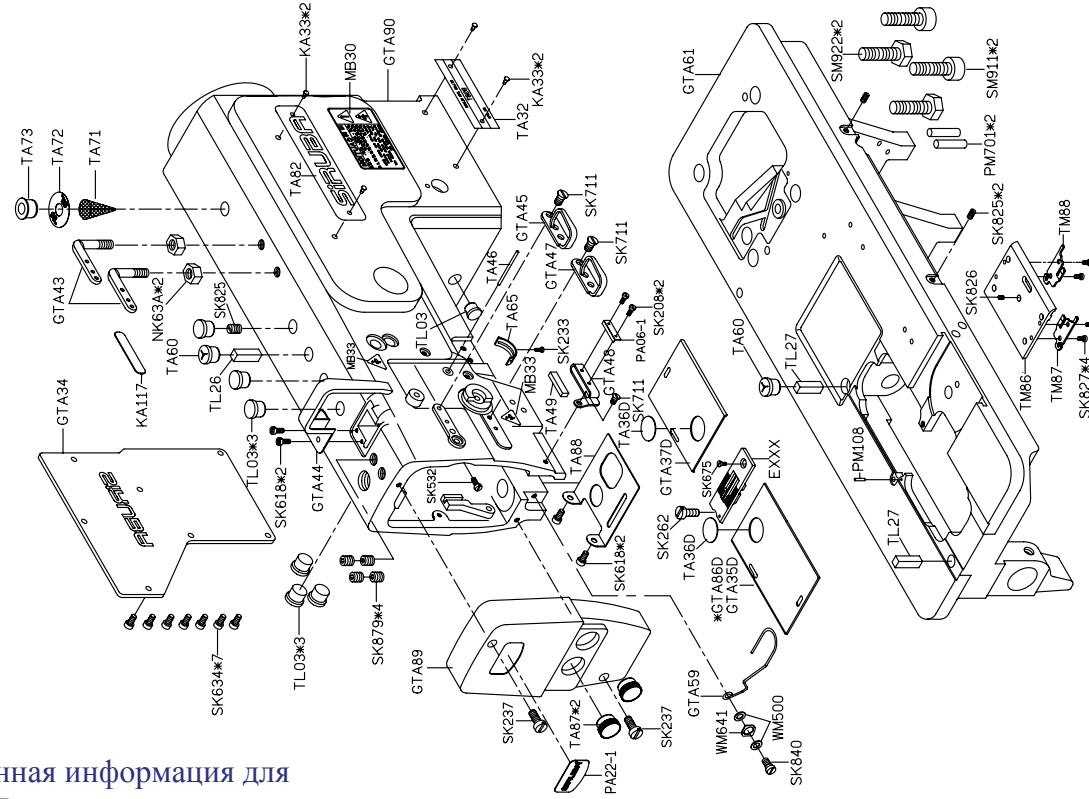
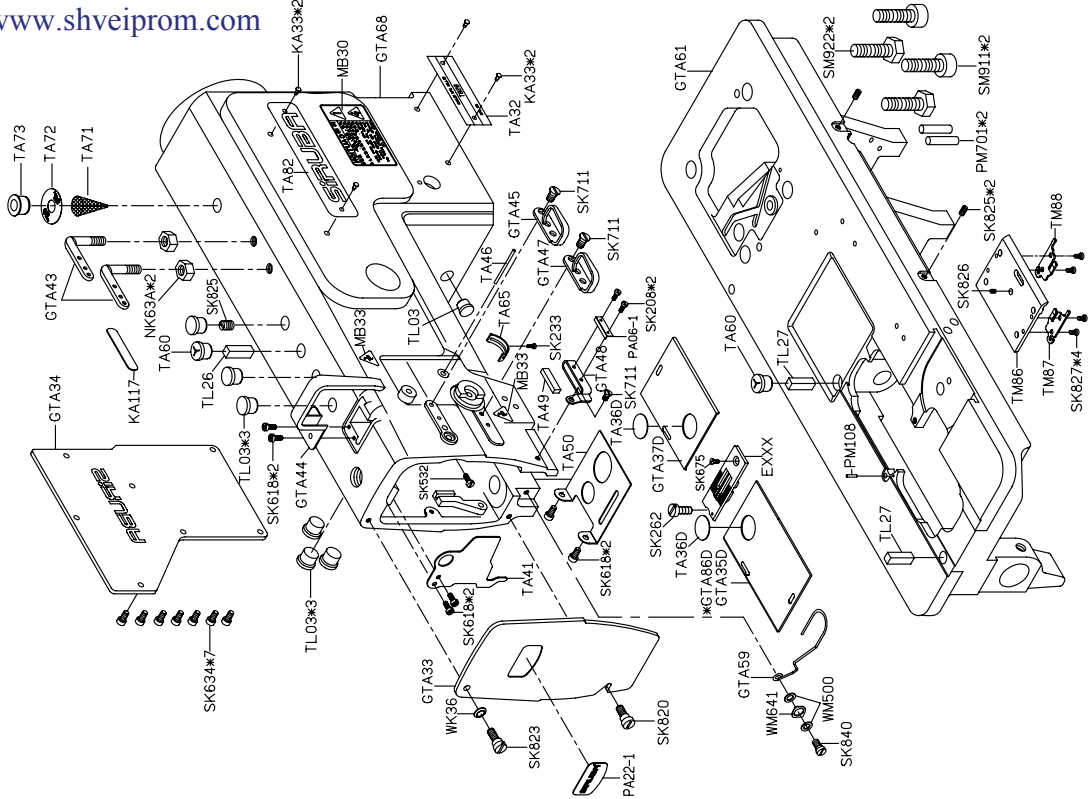
									
MODEL	OPERATING PANEL	SUB-CLASS	NEEDLE PLATE	FEED DOG	NEEDLE CLAMP	PRESSER FOOT	HOOK	BOBBIN	NEEDLE
機 型	操作盒	規 格	針 板	下送具	針 釧	押 具	旋 梭	梭 子	針 號
T828-48-032L/C	C300M-A2	1/8"(3.2)	E794-A	D794	M0032R M0032L	P791A	G170-A (G170+G410)	G307	DPX5#11
T828-48-048L/C	C300M-A2	3/16"(4.8)	E793-A	D793	M0048R M0048L	P790A	G170-A (G170+G410)	G307	DPX5#11
T828-48-064L/C	C300M-A2	1/4"(6.4)	E792-A	D792	M0064R M0064L	P789A	G170-A (G170+G410)	G307	DPX5#11
T828-72-032ML		1/8"(3.2)	E762	D734/P	M734	P762/S	G165	G310	DPX5#14
T828-72-048ML		3/16"(4.8)	E761	D736/P	M736	P761/S	G165	G310	DPX5#14
T828-72-064ML		1/4"(6.4)	E760	D730/P	M730	P760/S	G165	G310	DPX5#14
T828-72-032HL		1/8"(3.2)	E762	D734/P	M734	P762/S	G165	G310	DPX5#22
T828-72-048HL		3/16"(4.8)	E761	D736Q	M736	P761/S	G165	G310	DPX5#22
T828-72-064HL		1/4"(6.4)	E760	D730Q	M730	P760/S	G165	G310	DPX5#22
T828-72-032M/C	C300M-A2	1/8"(3.2)	E788-A	D754	M734	P762/S	G168-A (G168+G411)	G310	DPX5#14
T828-72-048M/C	C300M-A2	3/16"(4.8)	E787-A	D766	M736	P761/S	G168-A (G168+G411)	G310	DPX5#14
T828-72-064M/C	C300M-A2	1/4"(6.4)	E786-A	D745	M730	P760/S	G168-A (G168+G411)	G310	DPX5#14
T828-72-032H/C	C300M-A2	1/8"(3.2)	E788-A	D788D	M734	P762/S	G168-A (G168+G411)	G310	DPX5#22
T828-72-048H/C	C300M-A2	3/16"(4.8)	E787-A	D787D	M736	P761/S	G168-A (G168+G411)	G310	DPX5#22
T828-72-064H/C	C300M-A2	1/4"(6.4)	E786-A	D786D	M730	P760/S	G168-A (G168+G411)	G310	DPX5#22
T828-72-064HL/C	C300M-A2	1/4"(6.4)	E786-A	D786D	M730	P760/S	G168-A (G168+G411)	G310	DPX5#22
T828-75-032M		1/8"(3.2)	E762	D734/P	M0032R M0032L	P762/S	G166-A (G166+G407)	G310	DPX5#14
T828-75-048M		3/16"(4.8)	E761	D736/P	M0048R M0048L	P761/S	G166-A (G166+G407)	G310	DPX5#14

									
MODEL	OPERATING PANEL	SUB-CLASS	NEEDLE PLATE	FEED DOG	NEEDLE CLAMP	PRESSER FOOT	HOOK	BOBBIN	NEEDLE
機 型	操作盒	規 格	針 板	下送具	針 釗	押 具	旋 梭	梭 子	針 號
T828-75-064M		1/4*(6.4)	E760	D730/P	M0064R M0064L	P760/S	G166-A (G166+G407)	G310	DPX5#14
T828-75-032H		1/8*(3.2)	E762	D734/P	M0032R M0032L	P762/S	G166-A (G166+G407)	G310	DPX5#22
T828-75-048H		3/16*(4.8)	E761	D736Q	M0048R M0048L	P761/S	G166-A (G166+G407)	G310	DPX5#22
T828-75-064H		1/4*(6.4)	E760	D730Q	M0064R M0064L	P760/S	G166-A (G166+G407)	G310	DPX5#22
T828-75-032M/C	C300M-A2	1/8*(3.2)	E788-A	D754	M0032R M0032L	P762/S	G168-A1 (G168+G408)	G310	DPX5#14
T828-75-048M/C	C300M-A2	3/16 (4.8)	E787-A	D766	M0048R M0048L	P761/S	G168-A1 (G168+G408)	G310	DPX5#14
T828-75-064M/C	C300M-A2	1/4*(6.4)	E786-A	D745	M0064R M0064L	P760/S	G168-A1 (G168+G408)	G310	DPX5#14
T828-75-032H/C	C300M-A2	1/8*(3.2)	E788-A	D788D	M0032R M0032L	P762/S	G168-A1 (G168+G408)	G310	DPX5#22
T828-75-048H/C	C300M-A2	3/16*(4.8)	E787-A	D787D	M0048R M0048L	P761/S	G168-A1 (G168+G408)	G310	DPX5#22
T828-75-064H/C	C300M-A2	1/4*(6.4)	E786-A	D786D	M0064R M0064L	P760/S	G168-A1 (G168+G408)	G310	DPX5#22

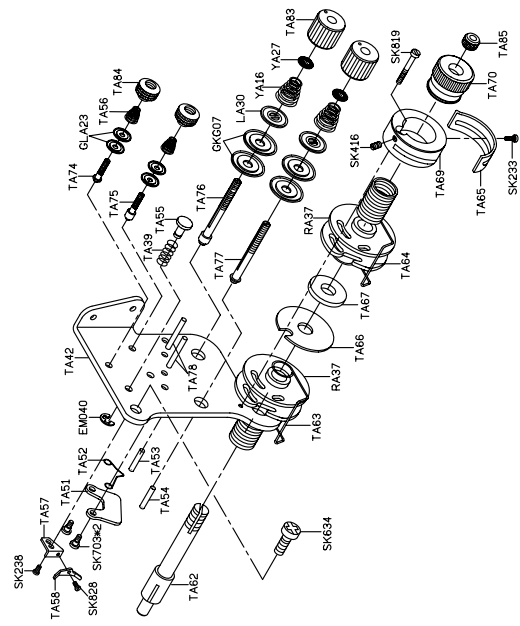
Данная информация для
Вас предоставлена
ООО "ШВЕЙПРОМКОМПЛЕКТ"
т/ф (499) 2592598 г.Москва
www.shveiprom.com
2592598@mail.ru

"ШВЕЙПРОМКОМПЛЕКТ"
 т/ф (499) 2592598 г.Москва
 www.shveiprom.com

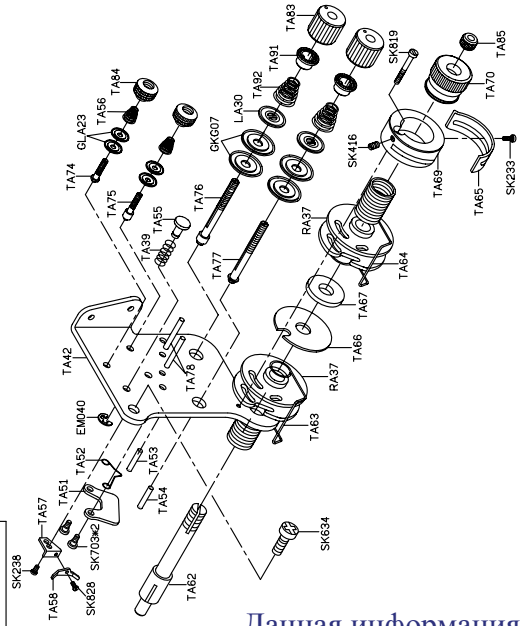
Данная информация для
 Вас предоставлена
 ООО



GTA42-A

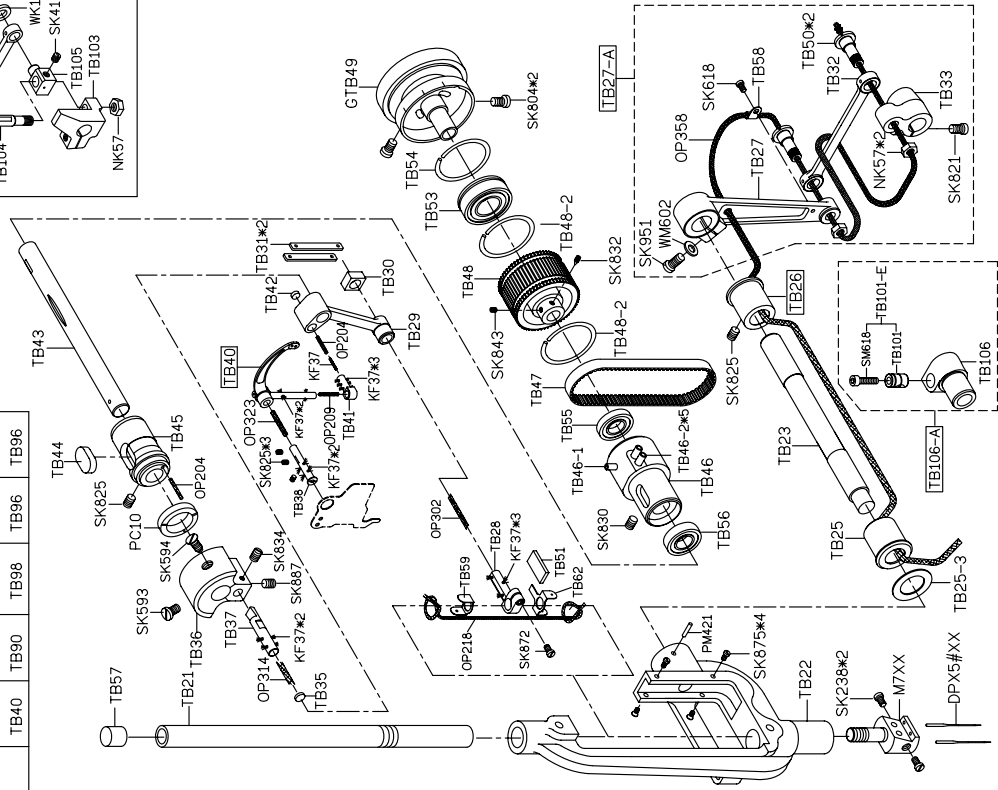
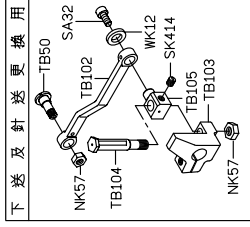


GTA91-A (FOR T828-47/48)



Данная информация для
 Вас предоставлена
 ООО "ШВЕЙПРОМКОМПЛЕКТ"
 т/ф (499) 2592598 г.Москва
www.shveiprom.com
2592598@mail.ru

MODEL	T828-42		T828-47		T828-72	
	M	H	L	M	H	
PARTS NO.	TB26	TB26	TB106-A	TB26	TB26	TB26
	TB27-A	TB27-A		TB27-A	TB27-A	TB27-A
	TB40	TB90		TB98	TB96	TB96
					TB96	TB96

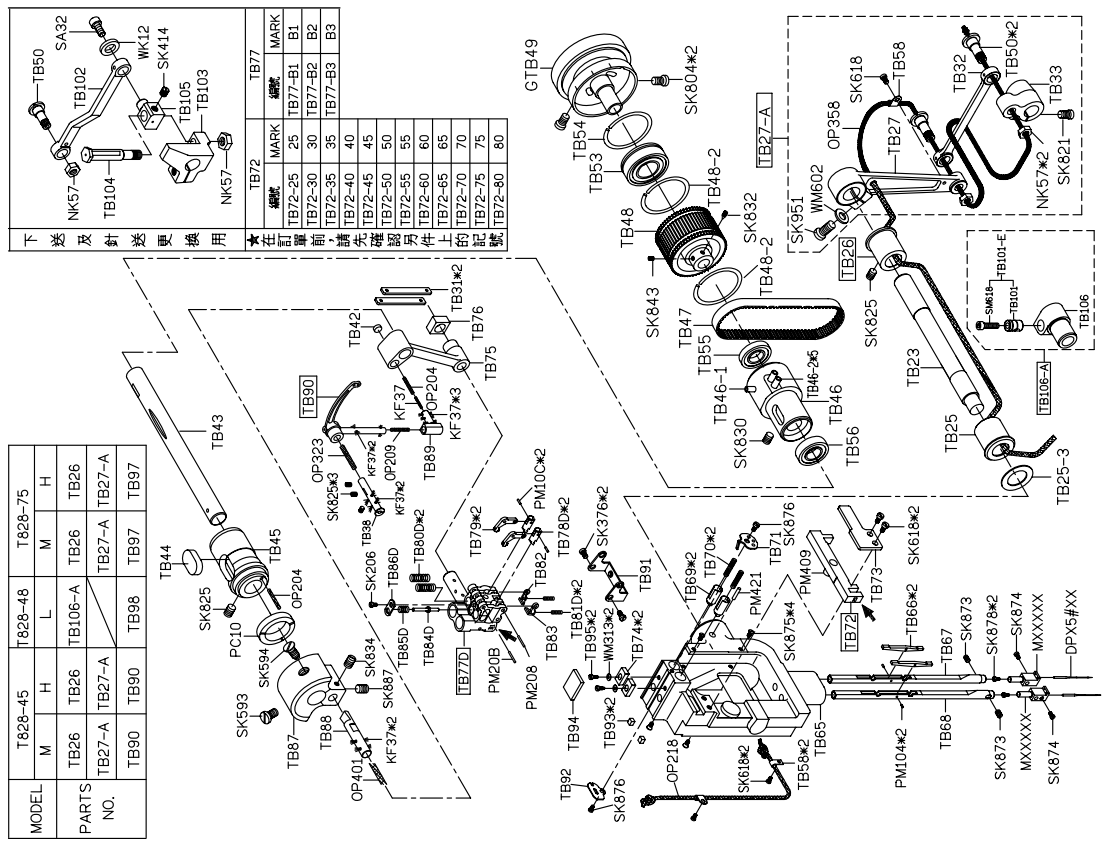


PARTS LIST FOR TB GROUP

PARTS LIST FOR TC GROUP

MODEL	T828-45			T828-48			T828-75		
	M	H	L	M	H	L	M	H	L
PARTS NO.	TB26	TB27-A	TB27-A	TB26	TB27-A	TB27-A	TB26	TB27-A	TB27-A
	TB90	TB90	TB98	TB97	TB97	TB97			

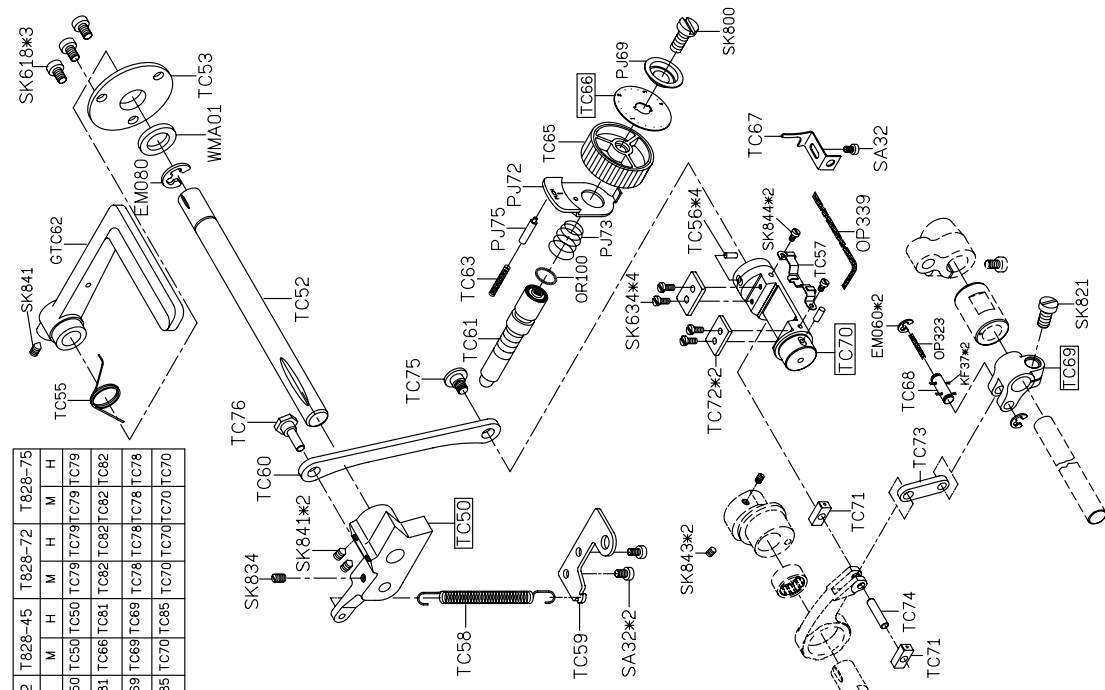
MODEL	T828-45			T828-48			T828-75		
	M	H	L	M	H	L	M	H	L
PARTS NO.	TC50	TC50	TC50	TC50	TC50	TC50	TC50	TC50	TC50
	TC69	TC69	TC69	TC69	TC69	TC69	TC69	TC69	TC69



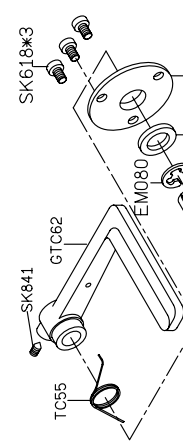
MODEL	T828-45			T828-48			T828-75		
	M	H	L	M	H	L	M	H	L
PARTS NO.	TC50	TC50	TC50	TC50	TC50	TC50	TC50	TC50	TC50
	TC69	TC69	TC69	TC69	TC69	TC69	TC69	TC69	TC69

MODEL	T828-45			T828-48			T828-75		
	M	H	L	M	H	L	M	H	L
PARTS NO.	TC50	TC50	TC50	TC50	TC50	TC50	TC50	TC50	TC50
	TC69	TC69	TC69	TC69	TC69	TC69	TC69	TC69	TC69

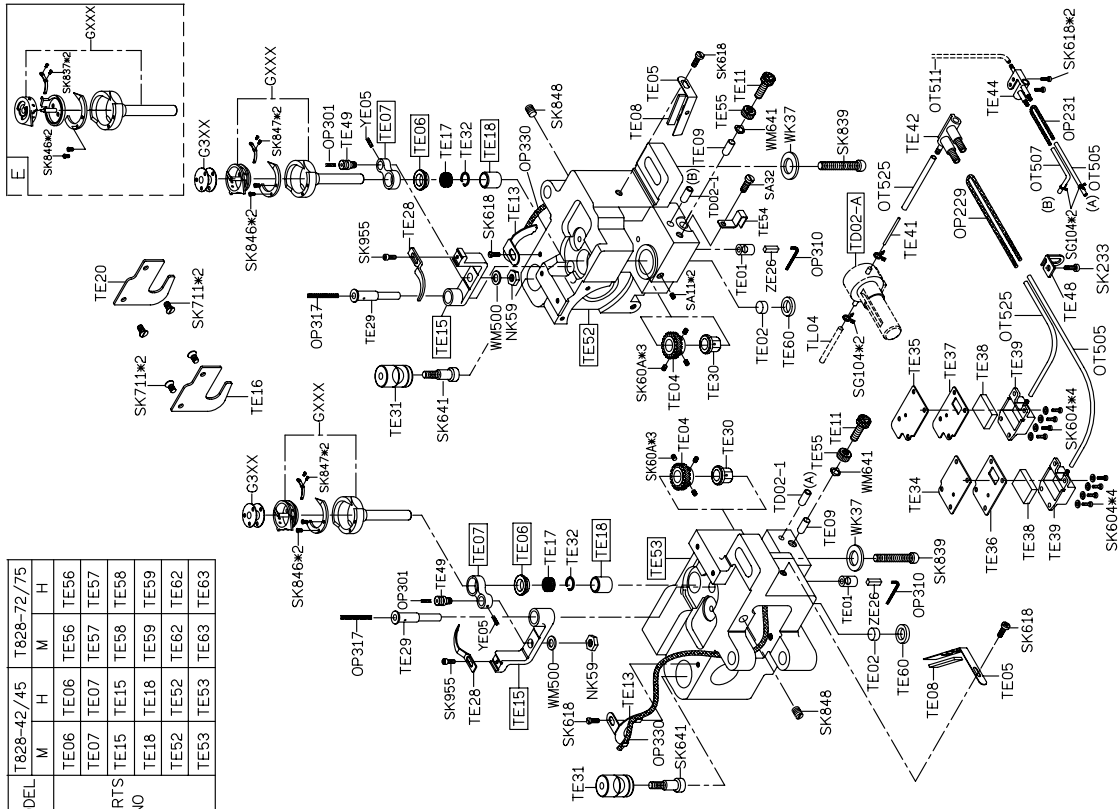
Данная информация для Вас предоставлена ООО "ШВЕЙПРОМКОМПЛЕКТ" т/ф (499) 2592598 г.Москва www.shveiprom.com 2592598@mail.ru



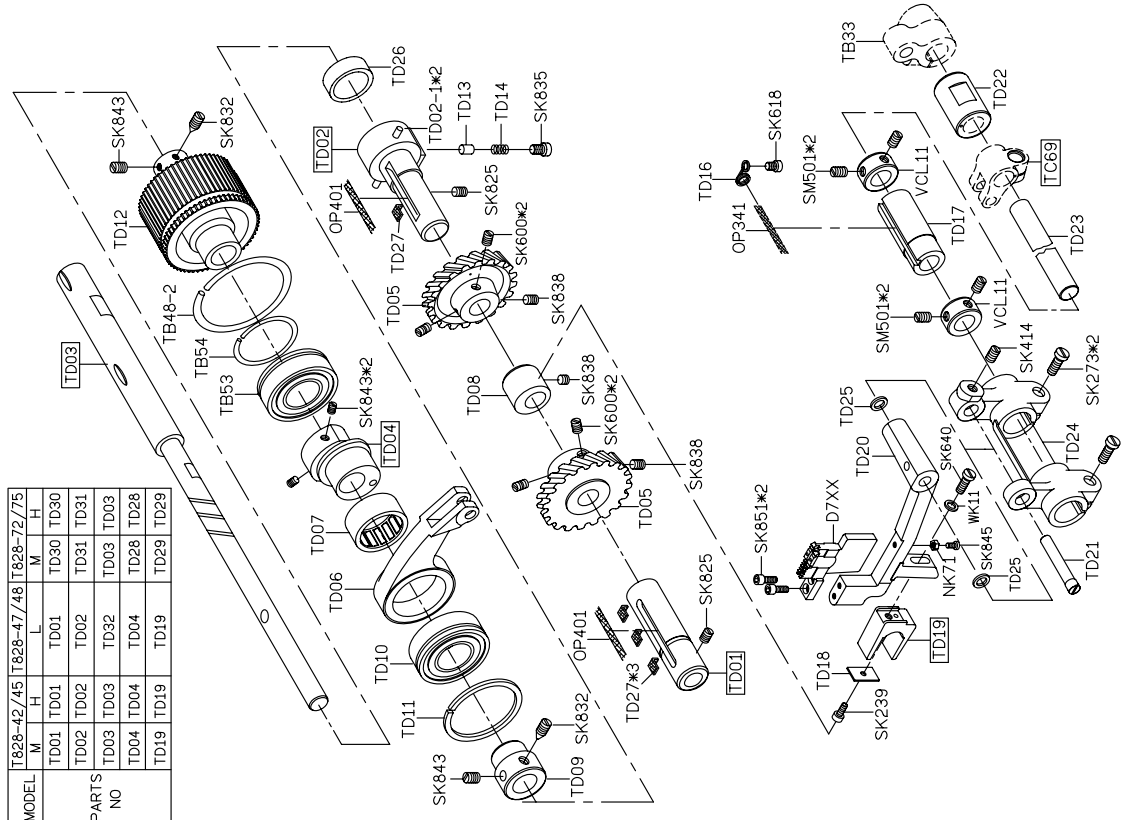
MODEL	T828-42			T828-45			T828-72			T828-75		
	M	H	L	M	H	L	M	H	L	M	H	L
PARTS NO.	TC50	TC50	TC50	TC50	TC50	TC50	TC50	TC50	TC50	TC50	TC50	TC50
	TC69	TC69	TC69	TC69	TC69	TC69	TC69	TC69	TC69	TC69	TC69	TC69



MODEL	T828-42/45	T828-72/75
	M H	M H
PARTS NO	TE06 TE07 TE15 TE18 TE52 TE53	TE56 TE57 TE58 TE59 TE62 TE63 TE66



MODEL	T828-42/45	T828-47/48	T828-72/75
	M H	L M H	M H
PARTS NO	TD01 TD02 TD03 TD04 TD19	TD01 TD02 TD03 TD04 TD19 TD28 TD29	TD01 TD02 TD03 TD04 TD19 TD26 TD27 TD28 TD29 TD30 TD31 TD32 TD33 TD34 TD35 TD36 TD37 TD38 TD39 TD40 TD41 TD42 TD43 TD44 TD45 TD46 TD47 TD48 TD49 TD50 TD51 TD52 TD53 TD54 TD55 TD56 TD57 TD58 TD59 TD60 TD61 TD62 TD63 TD64 TD65 TD66 TD67 TD68 TD69 TD70 TD71 TD72 TD73 TD74 TD75 TD76 TD77 TD78 TD79 TD80 TD81 TD82 TD83 TD84 TD85 TD86 TD87 TD88 TD89 TD90 TD91 TD92 TD93 TD94 TD95 TD96 TD97 TD98 TD99 TD100



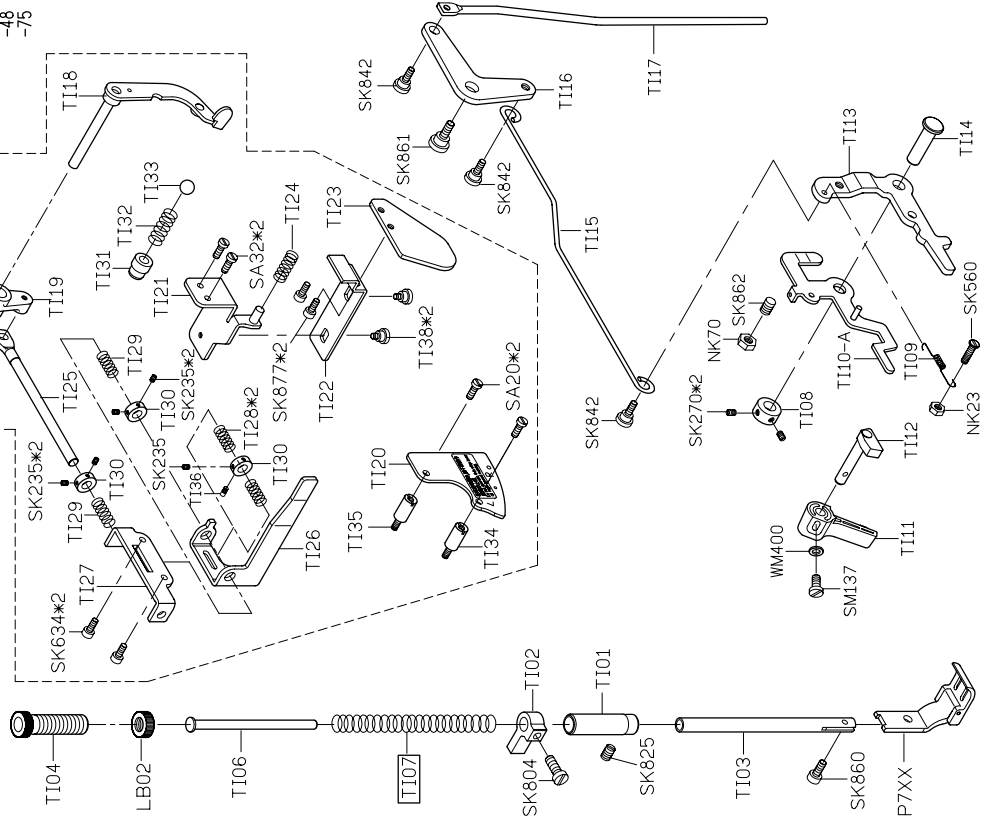
PARTS LIST FOR TD GROUP

PARTS LIST FOR TE GROUP

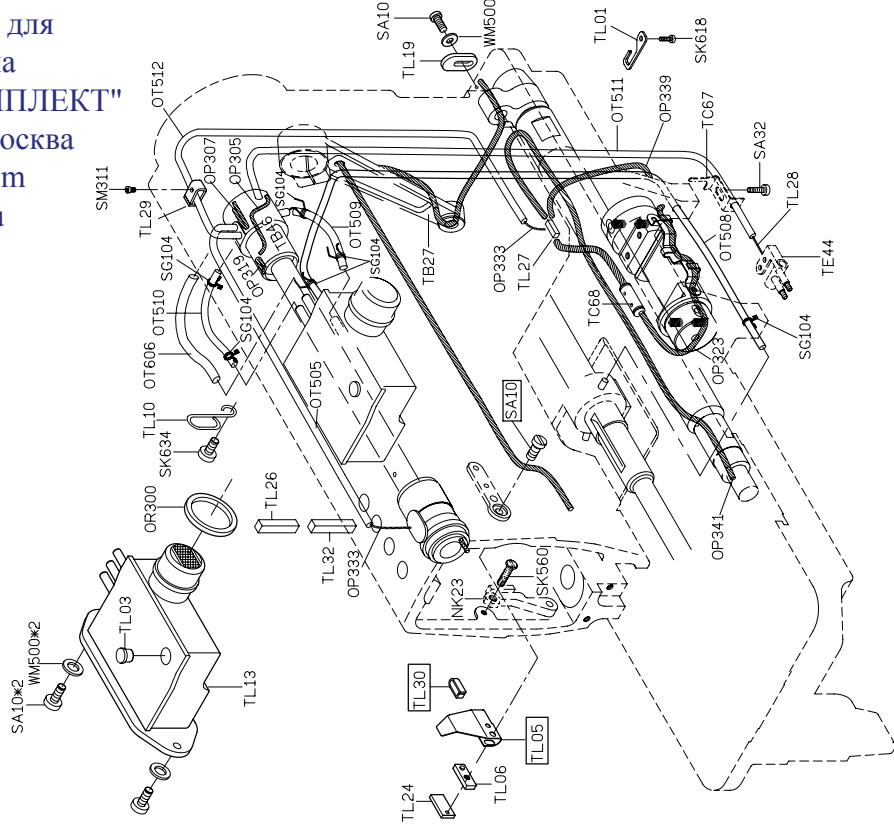
PARTS LIST FOR T1 GROUP

PARTS LIST FOR TL GROUP

MODEL	T828-42/45	T828-47/48	T828-72/75
PARTS NO	M	L	H
	T107	T145	T107

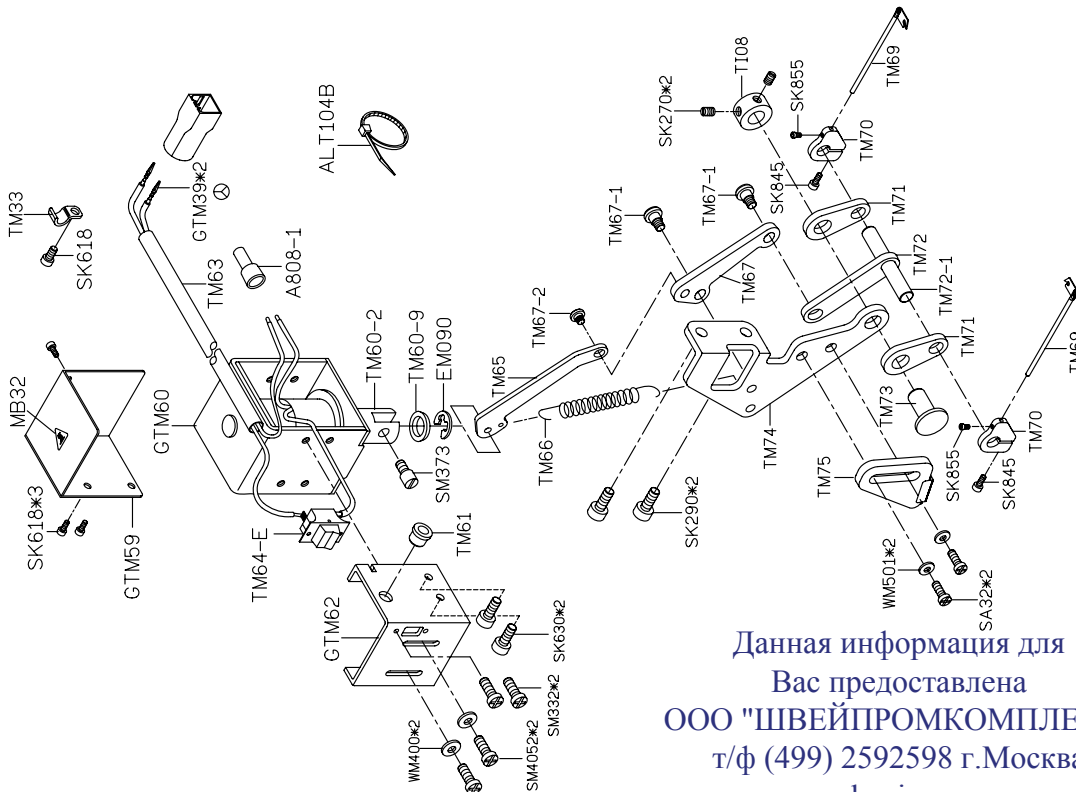
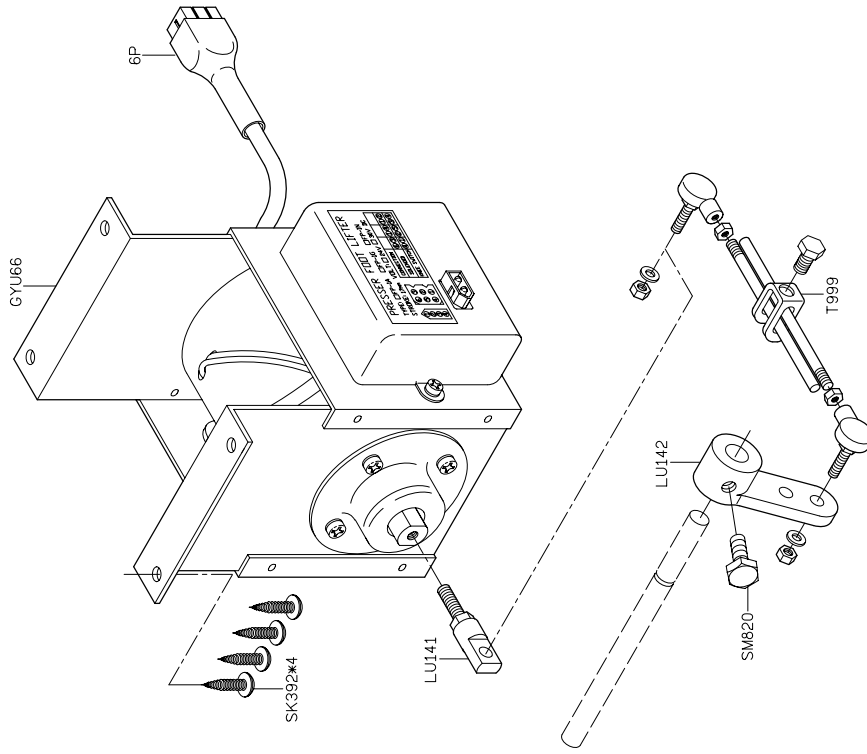


MODEL	T828-42/72	T828-45/75
PARTS NO	M	H
	SA10	SA12
	TL05	TL31



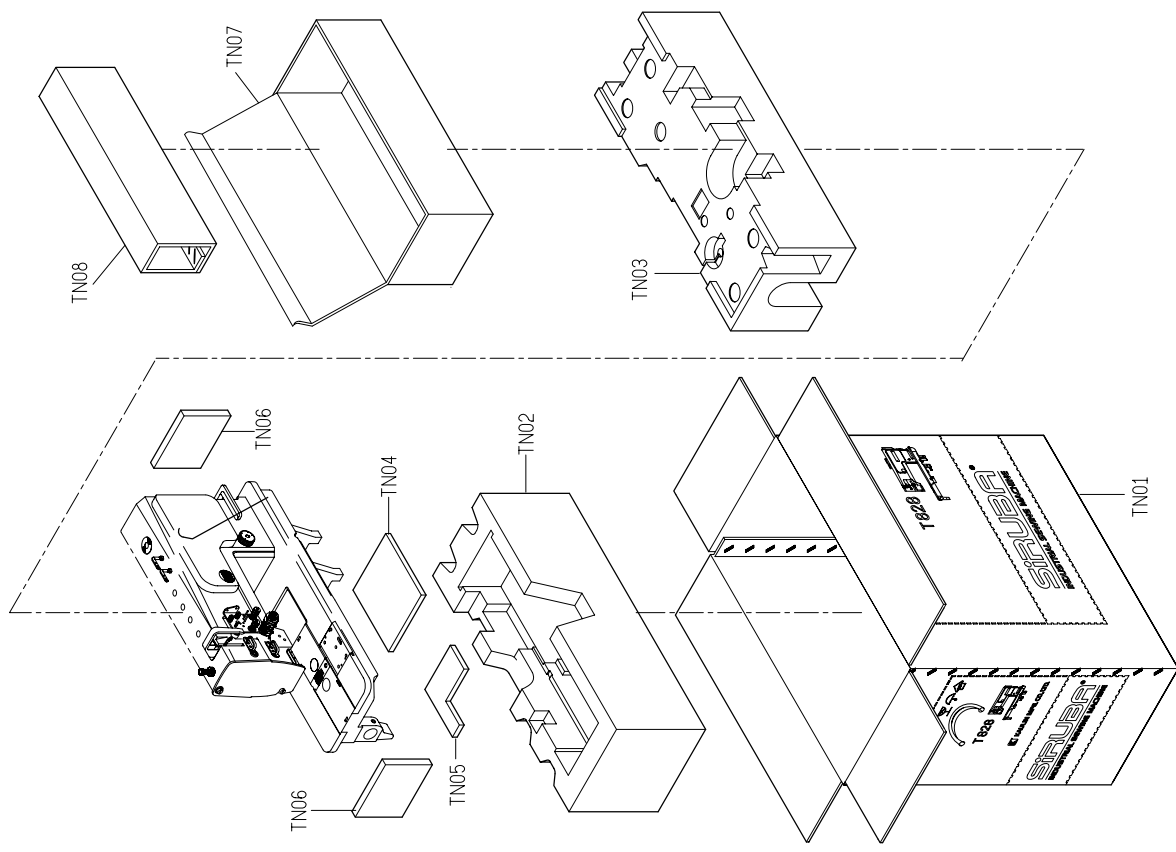
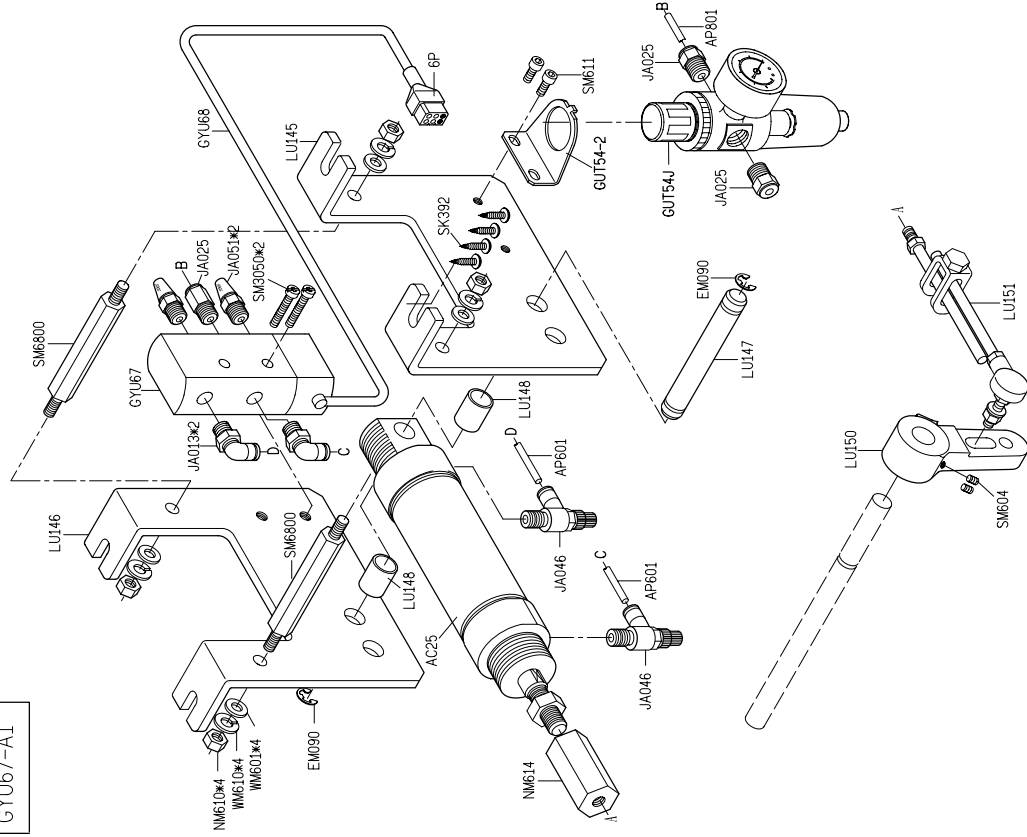
Данная информация для Вас предоставлена ООО "ШВЕЙПРОМКОМПЛЕКТ" т/ф (499) 2592598 г.Москва www.shveiprom.com 2592598@mail.ru

GYU66-A1

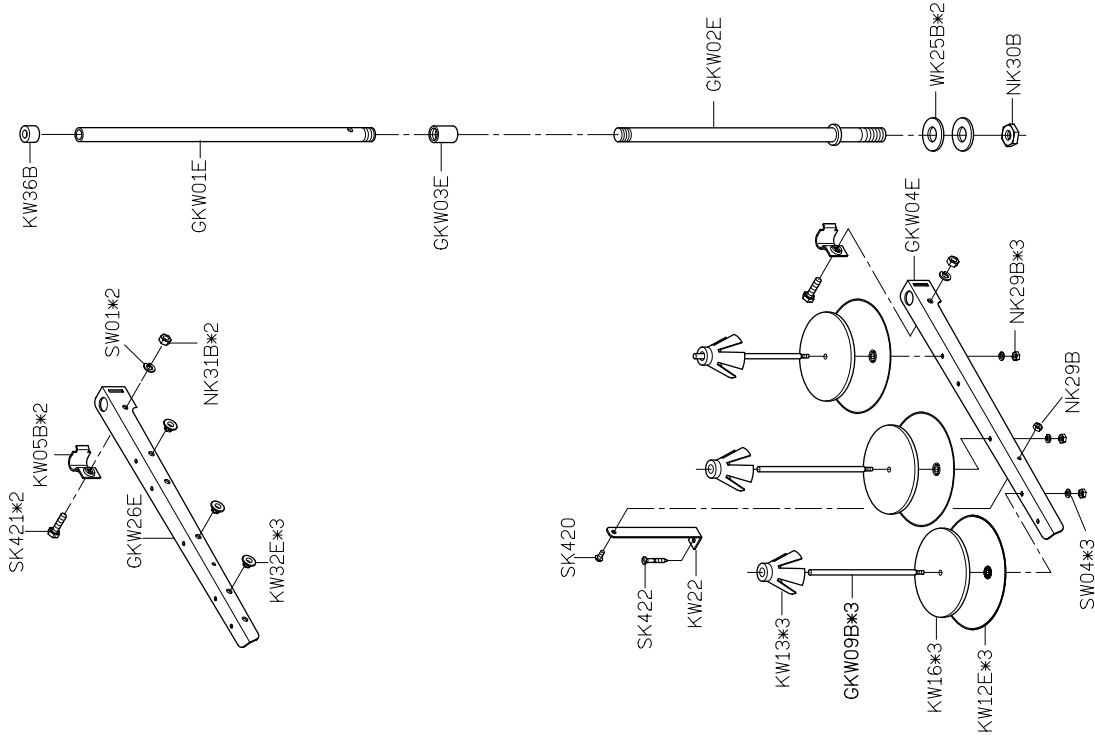


Данная информация для Вас предоставлена ООО "ШВЕЙПРОМКОМПЛЕКТ" т/ф (499) 2592598 г.Москва www.shveiprom.com 2592598@mail.ru

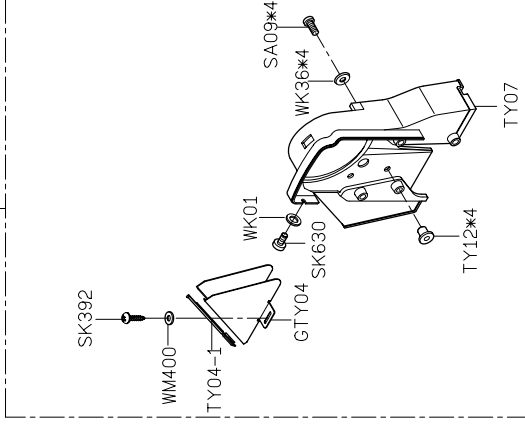
GYU67-A1



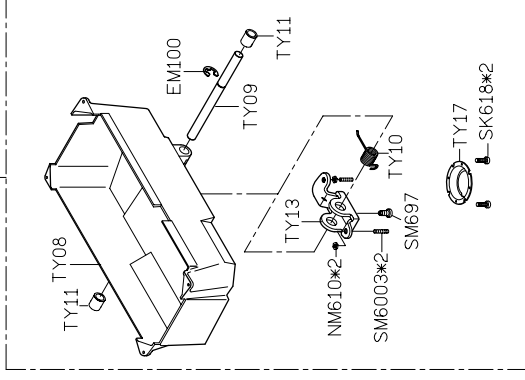
PY11-3



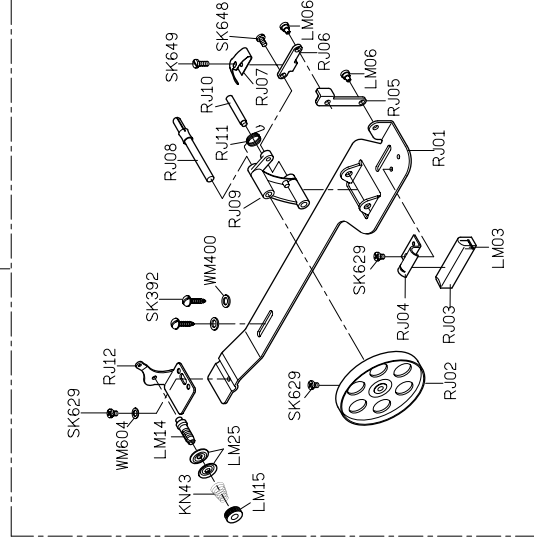
GTY07-A 手輪護蓋



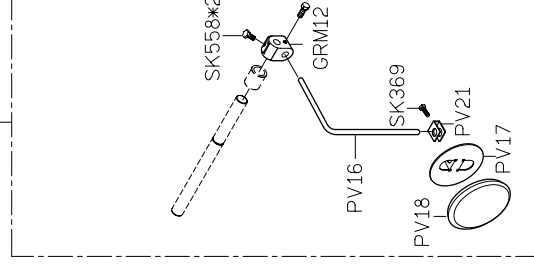
GTY08-A 油盤




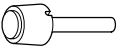
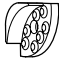
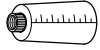




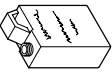







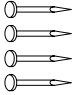



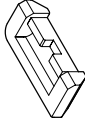
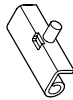



RJ01-A 繞線器



GPV16-A1 腳弓



Данная информация для
 Вас предоставлена
 ООО "ШВЕЙПРОМКОМПЛЕКТ"
 т/ф (499) 2592598 г.Москва
 www.shveiprom.com
 2592598@mail.ru

01 說明書		14 押具提昇軸		15*4 防震橡膠墊		16 壺		GMY01 防塵罩	
MY11 六角板手		MY13 六角板手		GXXX*4 梭子		KY02-A 油罐		KY03 油壺	
KY09 開口板手		KY10 六角板手		KY16 一字起子		KY17 一字起子		GKY26F 工具袋	
KZ03 乾燥劑		PY05*4 鐵釘		LY01 開口板手		LY02 木頭桿		針*4	
LY04*2 後鈕墊		LY05*2 後鈕		☆103D 切刀		TY02 零件圖		☆TP156 使用說明書	

MODEL	T828-42		T828-45		T828-47	T828-48		T828-72		T828-75	
	M	H	M	H	L	L	M	M	H	M	H
PARTS NO	G307	G307	G307	G307	G307	G307	G310	G310	G310	G310	G310
	KY17	KY17	KY14	KY14	KY17	KY14	KY17	KY17	KY17	KY14	KY14
	DPX5#14	DPX5#22	DPX5#14	DPX5#22	DPX5#11	DPX5#11	DPX5#14	DPX5#22	DPX5#14	DPX5#14	DPX5#22



T828

高林股份有限公司 KAULIN MFG. CO., LTD.