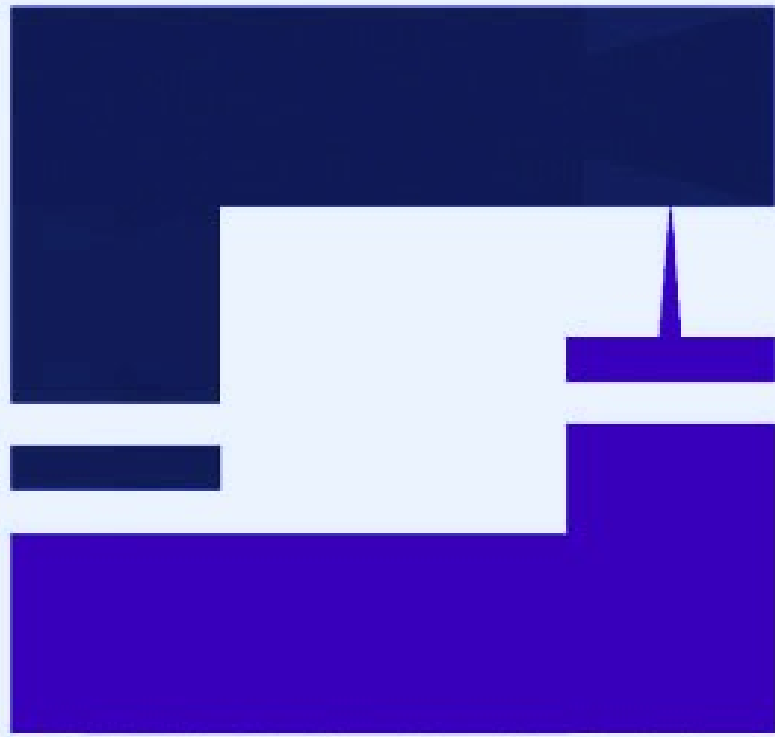
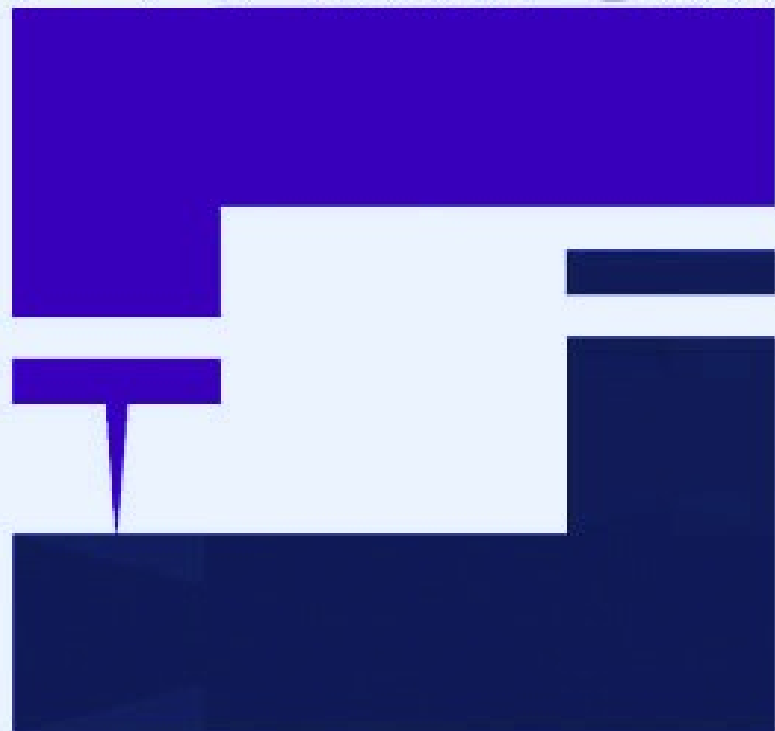


ШВЕЙПРОМ



КОМПЛЕКТ

Данная информация для
Вас предоставлена
ООО "ШВЕЙПРОМКОМПЛЕКТ"
т/ф (499) 2592598 г. Москва
www.shveiprom.com
2592598@mail.ru

PARTS BOOK

KM-740

2-NEEDLE, NEEDLE FEED
LOCK STITCH MACHINE

KM-740BL

2-NEEDLE, NEEDLE FEED
LOCK STITCH MACHINE
WITH LARGE HOOK



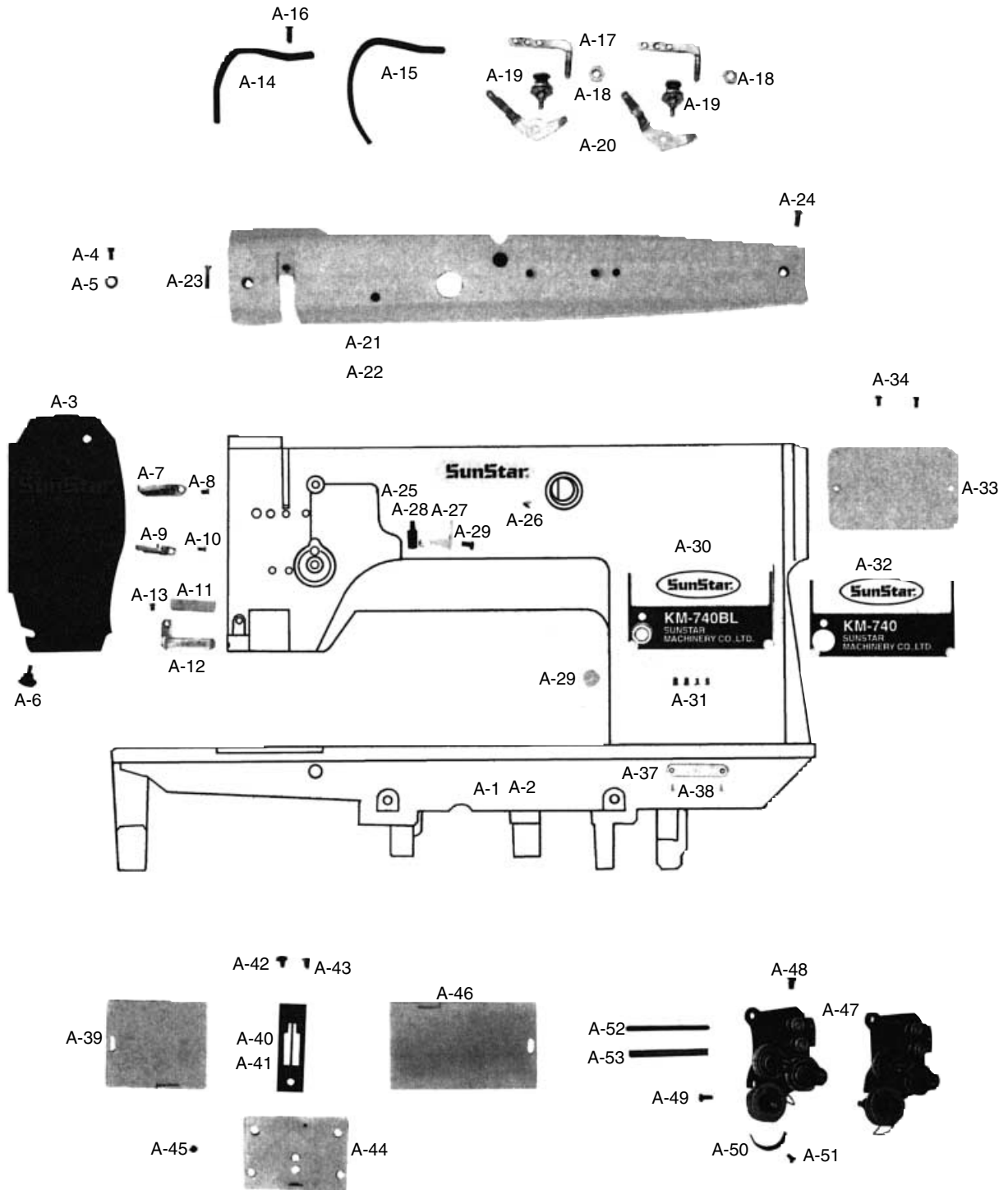
CONTENTS

목 차

A	<i>Machine Body & Threading Mechanism</i> 두부 외장 및 실 조절 관계.....	4
B	<i>Upper Shaft Mechanism</i> 상축 관계.....	6
C	<i>Presser Foot & Knee Lifting Mechanism</i> 노루발 및 무릎 올림 관계.....	8
D	<i>Feed Mechanism</i> 피이드 관계	10
E	<i>Lower Shaft & Rotary Hook Mechanism</i> 하축 및 로터리 훅 관계	12
F	<i>Needle Bar Rocking Mechanism</i> 바늘대 요동 관계	14
G	<i>Lubrication</i> 급유 관계.....	16
H	<i>Accessories</i> 액세서리 관계.....	18
I	<i>Gauge Parts</i> 게이지 관계	20

A

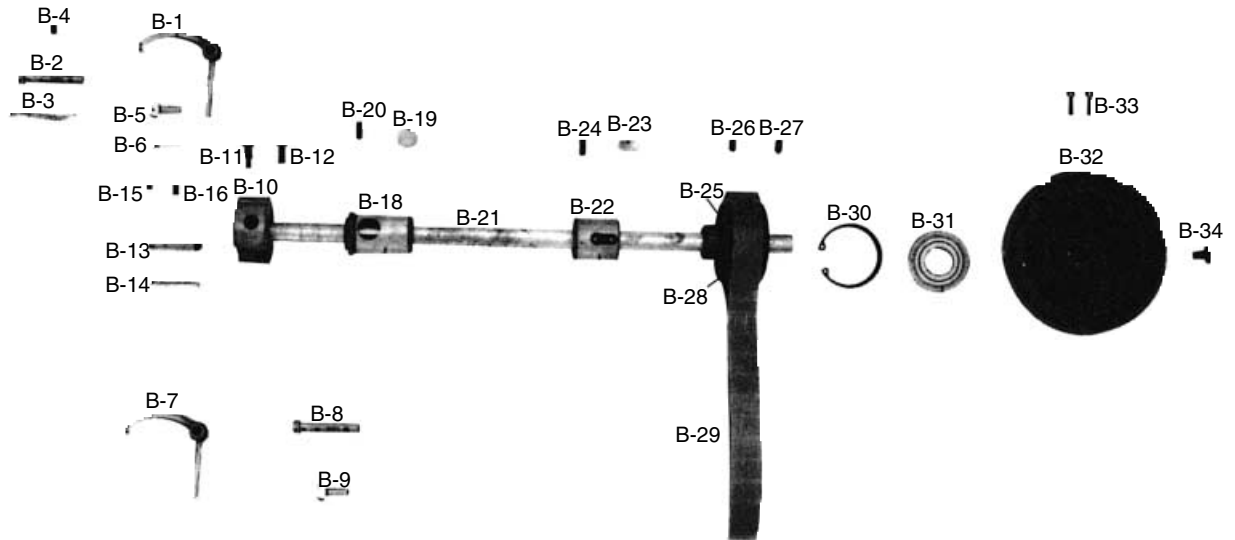
Machine Body & Threading Mechanism 두부 외장 및 실 조절 관계



Ref. No.	Parts No.	Note	Name of Parts	품 명	Q' ty		Assembly No.
					KM-740	KM-740BL	
A-1	01-001A-7400		Arm. Bed	아암. 베드(組)	1Set		
A-2	01-001A-740L		Arm. Bed	아암. 베드(組)		1Set	
A-3	01-006A-7400		Face Plate	면판	1	1	
A-4	01-008S-7400		Screw(U) for A-3	면판 쥘나사(상)	1	1	
A-5	01-007W-7400		Washer(U) for A-3	면판 와셔	1	1	
A-6	SC-0322-7400		Screw(9/64" n = 40)	면판 쥘나사(하) (9/64" n = 40)	1	1	
A-7	01-021C-7400		Arm Thread Guide(U)	실걸이(상)	1	1	
A-8	SC-0519-2302		Screw(9/64" n = 40)	마크 쥘나사(9/64" n = 40)	1	1	
A-9	01-022C-7400		Arm Thread Guide(M)	실걸이(하)	1	1	
A-10	SC-0519-2302		Screw(9/64" n = 40)	마크 쥘나사(9/64" n = 40)	1	1	
A-11	01-024M-7400		Felt for Upper Thread Supply	윗실 급유 펠트	1	1	
A-12	01-023C-7400		Arm Thread Guide(L)	윗실 펠트 잡이	1	1	
A-13	SC-0519-2302		Screw(9/64" n = 40)	마크 쥘나사(9/64" n = 40)	1	1	
A-14	01-010C-7400		Thread Take Up Cover	실채기 커버	1		
A-15	01-005C-740L		Thread Take Up Cover	실채기 커버		1	
A-16	SC-0171-2302		Screw(3/16" n = 28)	지그재그조절 브라켓 커버나사(3/16" n = 28)	1	1	
A-17	01-015A-7400		Top Cover Thread Guide	세구멍 실걸이	2		
A-18	SN-0121-4000		Nut(15/64" n = 28)	육각너트	2		
A-19	40-001A-1230		Tension Adjusting Assembly	보조 실조절 장치(組)		2Set	
A-20	40-002A-1230		Top Cover Thread Guide	실 안내판		2	
A-21	01-011A-7400		Top Cover	윗뚜껑	1		
A-22	01-011A-740L		Top Cover	윗뚜껑		1	
A-23	SC-0178-7400		Screw(11/64" n = 40)	윗뚜껑 쥘나사(좌) (11/64" n = 40)	1	1	
A-24	SC-0179-3710		Screw(11/64" n = 40)	윗뚜껑 쥘나사(우) (11/64" n = 40)	1	1	
A-25	01-039M-3710		Brand Mark	상표 마크	1	1	
A-26	01-035P-7400		Pin for A-25	번호판 핀	2	2	
A-27	01-036A-740L		Upper Thread Guide	실걸이		1	
A-28	01-037S-740L		Pivot Screw(1/4" n = 24)	실채기 토대 나사		1	
A-29	SC-0173-1230		Screw(3/16" n = 32)	기름막이판잡이 쥘나사(3/16" n = 32)		1	
A-30	01-020M-7400		Model Mark	기종 마크	1		
A-31	SC-0519-2302		Screw(9/64" n = 40)	마크 쥘나사(9/64" n = 40)	4	4	
A-32	01-015M-740L		Model Mark	기종 마크		1	
A-33	01-014C-7400		Rear Cover	윗뚜껑	1	1	
A-34	SC-0502-2302		Screw(9/64" n = 40)	윗뚜껑 고정판 고정 나사(11/64" n = 40)	2	2	
A-35	06-001C-7400		Rubber Cap	피이드 조절기 구멍마개	1	1	
A-37	01-035P-1370		Machine Number Plate	번호판	1	1	
A-38	01-035P-7400		Pin for A-37	번호판 핀	2	2	
A-39	01-030A-7400		Slide Plate(L)	미끄럼 판(左)	1	1	
A-40	01-027A-7400		Needle Plate(1/4)	침판 1/4	1		
A-41	01-027A-740L		Needle Plate(1/4)	침판 1/4		1	
A-42	SC-0170-7400		Screw(11/64" n = 40)	침판 나사(11/64" n = 40)	1	1	
A-43	SC-A119-4119		Screw(11/64" n = 40)	홈볼이 접시 작은나사(11/64" n = 40)	1	1	
A-44	01-032A-7400		Slide Plate "FRONT"	미끄럼 판(前)	1	1	
A-45	SC-0110-1230		Screw(15/64" n = 28)	바늘대 붓싱 나사(15/64" n = 28)	1	1	
A-46	01-031A-7400		Slide Plate(R)	미끄럼 판(右)	1	1	
A-47	01-018A-7400		Thread Tension Control Assembly	실조절 장치(조)	1		
A-47-1	01-013A-740L		Thread Tension Control Assembly	실조절 장치(조)		1	
A-48	SC-0543-2302		Screw(11/64" n = 40)	톱 커버 힌지 고정 나사(11/64" n = 40)	1	1	
A-49	SC-A156-4118		Screw(9/64" n = 40)	홈볼이 냄비 작은나사(9/64" n = 40)	1	1	
A-50	01-019C-7400		Stopper for Thread Take Up Spring	실조절 장치 스톱퍼	1	1	
A-51	SC-0531-2302		Screw(9/64" n = 40)	톱 커버 고정판 고정나사(소) (9/64" n = 40)	1	1	
A-52	01-026C-7400		Tension Release Bar	실 늦추기 축	1	1	
A-53	01-025C-7400		Pipe For A-52	동 파이프	1	1	

B

Upper Shaft Mechanism 상축 관계



Ref. No.	Parts No.	Note	Name of Parts	품 명	Q'ty		Assembly No.
					KM-740	KM-740BL	
B-1	02-102A-7400		Thread Take Up Lever	실채기	1		
B-2	02-001P-7400		Hinge Pin for B-1	실채기 핀	1		
B-3	44-0000-1230		Oil Wick	유심	1		
B-4	SC-0507-1230		Screw(15/64" n=28)	상축 붓싱 쥘나사(15/64" n=28)	1	1	
B-5	02-103A-7400		Take Up Lever Holder	실채기 잡이	1		
B-6	06-033M-7400		Wick for B-5	절환기 헬트	1	1	
B-7	08-104A-790L		Thread Take Up Lever	실채기(5)		1	
B-8	02-001P-740L		Hinge Pin for B-7	실채기 핀		1	
B-9	07-103A-740L		Take Up Lever Holder	실채기 잡이		1	
B-10	02-105A-7400		Link Cam	링크캠	1	1	
B-11	SC-0123-1230		Screw(9/32" n=28)	링크캠 위치 고정 나사(9/32" n=28)	1	1	
B-12	SC-0124-7400		Screw(9/32" n=28)	링크캠 쥘나사(9/32" n=28)	1	1	
B-13	02-104P-7400		Needle Bar Crank Shaft	링크캠 핀	1	1	
B-14	44-0000-1230		Oil Wick	유심	1	1	
B-15	SC-A129-4515		Screw(1/4" n=40)	흡불이 멈춤나사(1/4" n=40)	1	1	
B-16	SC-A308-4517		Screw(1/4" n=40)	육각구멍불이 멈춤나사(1/4" n=40)	1	1	
B-18	02-108A-7400		Upper Shaft Bushing(F)	상축 앞 붓싱	1	1	
B-19	02-009M-7400		Felt for B-18	상축 앞 붓싱 헬트	1	1	
B-20	SC-0514-7400		Screw(1/4" n=40)	상축 앞 붓싱 쥘나사(1/4" n=40)	1	1	
B-21	02-110A-7400		Upper Shaft	상축	1	1	
B-22	02-111A-7400		Upper Shaft Bushing(M)	상축 중 붓싱	1	1	
B-23	02-012M-7400		Felt for B-22	상축 중 붓싱 헬트	1	1	
B-24	SC-0507-1230		Screw(15/64" n=28)	상축 앞 붓싱 쥘나사(15/64" n=28)	1	1	
B-25	02-014A-7500		Timing Belt Pulley(U)	타이밍 벨트 풀리(上)	1	1	
B-26	SC-A308-4517		Screw(1/4" n=40)	육각구멍불이 멈춤나사(1/4" n=40)	1	1	
B-27	SC-A117-4417		Screw(1/4" n=40)	육각구멍불이 멈춤나사(1/4" n=40)	1	1	
B-28	02-015C-7400		Side Ring	후렌치	2	2	
B-29	02-013A-7400		Timing Belt	타이밍 벨트	1	1	
B-30	02-018G-7400		Stop Ring(C)	베어링 스냅링(47)	1	1	
B-31	02-019A-7400		Bearing(6204ZZ)	6204 베어링	1	1	
B-32	02-020A-7400		Pulley	풀리	1	1	
B-33	SC-0150-2500		Screw(15/64" n=28)	풀리 고정 나사(15/64" n=28)	2	2	
B-34	SC-0188-1230		Screw(5/16" n=24)	풀리 큰 나사(5/16" n=24)	1	1	

수정 리스트

Changed Parts List

No.	Ref. No.	Parts No.	Name of Parts	Contents	Date	Old Parts No.	Remarks
1	D-43	06-012A-7500	Stud Pin(B)	Substitution	98. 5	06-027P-7400	
2	E-6	SC-A117-4417	Screw(1/4" n = 40)	Substitution	98. 5	SC-0115-4215	
3	E-7	SC-A308-4517	Screw(1/4" n = 40)	Substitution	98. 5	SC-0129-4515	
4	E-9	SC-A550-4517	Screw(1/4" n = 40)	Substitution	98. 5	SC-0115-4215	
5	E-44	SC-A550-4517	Screw(1/4" n = 40)	Substitution	98. 5	SC-0129-4515	
6	E-45	SC-A550-4517	Screw(1/4" n = 40)	Substitution	98. 5	SC-0129-4515	
7	H-3	91-108C-1230	Oil Tank	Substitution	98. 4	91-008C-1230	
8	H-23	43-007A-7400	Knee Lifting Assembly	Substitution	98. 7	91-002A-2302	
9	E-42	SC-0105-4517	Screw(11/64" n = 40)	Substitution	98. 8	SC-0352-4515	
10	E-48	SC-0105-4517	Screw(11/64" n = 40)	Substitution	98. 8	SC-0352-4515	
11	A-16	SC-0171-4120	Screw(3/64" n = 32)	Substitution	98. 10	SC-0501-4120	
12	A-37	01-035P-1370	Machine Number Plate	Substitution	98. 10	01-034M-7400	
13	A-42	SC-0170-4124	Screw(9/64" n = 40)	Substitution	98. 10	SC-A174-4122	
14	A-43	SC-A119-4119	Screw(11/64" n = 40)	Substitution	98. 10	SC-0119-4119	
15	D-62	06-079A-5607	Feed Rock Shaft	Substitution	98. 11	06-044A-7400	
16	E-20	07-011A-7400	Timming Belt Pulley	Substitution	98. 11	07-017A-7500	
17	G-25	06-043R-1230	Packing For G-24	Substitution	98. 11	44-028R-7400	
18	H-23-1	91-002S-3400	Set Screw For H-23	Substitution	99. 1	91-003S-2302	
19	H-23-2	43-010G-3400	Spring For H-23	Additional Parts	99. 1		
20	H-25	91-003C-2700	L Wrench(3mm)	Additional Parts	99. 1		
21	B-15	SC-A129-4515	Screw(1/4" n = 40)	Substitution	99. 3	SC-0129-4515	
22	D-27	06-024S-7400	Screw(3/16" n = 32)	Substitution	99. 3	SC-0173-4118	
23	D-36	SC-A308-4517	Screw(15/64" n = 28)	Substitution	99. 3	SC-0317-4517	
24	D-64	SC-0514-4515	Screw(15/64" n = 28)	Substitution	99. 3	SC-0507-4515	
25	D-66	SC-A129-4515	Screw(1/4" n = 40)	Substitution	99. 3	SC-0129-4515	
26	D-68	SC-0514-4515	Screw(15/64" n = 28)	Substitution	99. 3	SC-0507-4515	
27	F-16	SC-A116-4120	Screw(3/32" n = 56)	Substitution	99. 3	SC-0116-4120	
28	G-3	06-024S-7400	Screw(3/16" n = 32)	Substitution	99. 3	SC-0173-4118	
29	H-24	41-101A-1230	Bobbin Winder Ass'y	Substitution	99. 4	41-001A-1230	
30	D-76	SC-0212-4113	Screw(1/8" n = 44)	Substitution	99. 4	SC-0212-4124	
31	F-9	04-105A-7400	Needle Bar Guide Slide Block	Substitution	01. 01	04-005A-7400	00. 4/4
32	A-6	SC-0322-7400	Screw(9/64" n = 40)	Substitution	01. 10	SC-0322-2125	
33	A-8	SC-0519-2302	Screw(9/64" n = 40)	Substitution	01. 10	SC-0519-2120	
34	A-10	SC-0519-2302	Screw(9/64" n = 40)	Substitution	01. 10	SC-0519-2120	
35	A-13	SC-0519-2302	Screw(9/64" n = 40)	Substitution	01. 10	SC-0519-2120	
36	A-16	SC-0519-2302	Screw(11/64" n = 40)	Substitution	01. 10	SC-0171-4120	
37	A-23	SC-0178-7400	Screw(11/64" n = 40)	Substitution	01. 10	SC-0178-4118	
38	A-24	SC-0179-3710	Screw(11/64" n = 40)	Substitution	01. 10	SC-0179-4125	
39	A-29	SC-0173-1230	Screw(3/16" n = 32)	Substitution	01. 10	SC-0173-4118	
40	A-31	SC-0519-2302	Screw(9/64" n = 40)	Substitution	01. 10	SC-0519-2120	

NOTE)

수정 리스트

Changed Parts List

No.	Ref. No.	Parts No.	Name of Parts	Contents	Date	Old Parts No.	Remarks
41	A-34	SC-0502-2302	Screw(9/64" n = 40)	Substitution	01. 10	SC-0502-4125	
42	A-36		Maker Mark	Deleted Part	01. 10	01-035M-8130	
43	A-42	SC-0170-7400	Screw(11/64" n = 40)	Substitution	01. 10	SC-0170-4124	
44	A-45	SC-0110-1230	Screw(15/64" n = 28)	Substitution	01. 10	SC-0110-4115	
45	A-48	SC-0543-2302	Screw(11/64" n = 40)	Substitution	01. 10	SC-0543-4525	
46	A-51	SC-0531-2302	Screw(9/64" n = 40)	Substitution	01. 10	SC-0531-4125	
47	A-36		Maker Mark	Deleted Part	01. 10	01-035M-8130	
48	B-1	02-102A-7400	Thread Take Up Lever	Substitution	01. 10	02-002A-7400	
49	B-4	SC-0507-1230	Screw(15/64" n = 28)	Substitution	01. 10	SC-0507-4515	
50	B-5	02-103A-7400	Take Up Lever Holder	Substitution	01. 10	02-003A-7400	
51	B-10	02-105A-7400	Link Cam	Substitution	01. 10	02-005A-7400	
52	B-11	SC-0123-1230	Screw(9/32" n = 28)	Substitution	01. 10	SC-0123-4422	
53	B-12	SC-0124-7400	Screw(9/32" n = 28)	Substitution	01. 10	SC-0124-4522	
54	B-13	02-104P-7400	Needle Bar Crank Shaft	Substitution	01. 10	02-004P-7400	
55	B-17		Thrust Ring	Substitution	01. 10	02-007A-7400	
56	B-18	02-108A-7400	Upper Shaft Bushing(F)	Substitution	01. 10	02-008A-7400	
57	B-20	SC-0514-7400	Screw(1/4" n = 40)	Substitution	01. 10	SC-0514-4515	
58	B-21	02-110A-7400	Upper Shaft	Substitution	01. 10	02-010A-7400	
59	B-22	02-111A-7400	Upper Shaft Bushing(M)	Substitution	01. 10	02-011A-7400	
60	B-24	SC-0507-1230	Screw(15/64" n = 28)	Substitution	01. 10	SC-0507-4515	
61	B-33	SC-0150-2500	Screw(15/64" n = 28)	Substitution	01. 10	SC-0150-4122	
62	B-34	SC-0188-1230	Screw(5/16" n = 24)	Substitution	01. 10	SC-0188-4124	
63	C-1	05-101A-7400	Presser Bar	Substitution	01. 10	05-001A-7400	
64	C-2	05-102A-7400	Presser Bar Bushing(U)	Substitution	01. 10	05-002A-7400	
65	C-3	SC-0507-1230	Screw(15/64" n = 28)	Substitution	01. 10	SC-0507-4515	
66	C-4	05-103A-7400	Presser Bar Holder	Substitution	01. 10	05-003A-7400	
67	C-6	05-104A-7400	Presser Bar Bracket	Substitution	01. 10	05-004A-7400	
68	C-9	SC-0158-3710	Screw(9/64" n = 40)	Substitution	01. 10	SC-0158-4122	
69	C-13	SC-0507-1230	Screw(15/64" n = 28)	Substitution	01. 10	SC-0507-4515	
70	C-15	SC-0315-2302	Screw(9/64" n = 40)	Substitution	01. 10	SC-0315-4122	
71	C-29	SC-0128-7400	Screw(11/64" n = 40)	Substitution	01. 10	SC-0128-4118	
72	C-31	SC-0542-1230	Screw(11/64" n = 40)	Substitution	01. 10	SC-0542-4515	
73	D-2	SC-0193-1230	Screw(3/16" n = 28)	Substitution	01. 10	SC-0193-4122	
74	D-9	SC-0507-1230	Screw(15/64" n = 28)	Substitution	01. 10	SC-0507-4515	
75	D-12	06-104A-7400	Feed Regulator	Substitution	01. 10	06-004A-740L	
76	D-15	SC-0128-7400	Screw(11/64" n = 40)	Substitution	01. 10	SC-0128-4118	
77	D-19	06-107A-7400	Reverse Lever Shaft Crank	Substitution	01. 10	06-007A-7400	
78	D-20	SC-0330-7400	Screw(15/64" n = 28)	Substitution	01. 10	SC-0330-4422	
79	D-21	06-116A-7400	Reverse Lever Shaft	Substitution	01. 10	06-016A-7400	
80	D-22	06-117A-7400	Link For Reverse Lever Spring	Substitution	01. 10	06-017A-7400	

NOTE)

수정 리스트

Changed Parts List

No.	Ref. No.	Parts No.	Name of Parts	Contents	Date	Old Parts No.	Remarks
81	D-23	SC-0122-1230	Screw(15/64" n = 28)	Substitution	01. 10	SC-0122-4522	
82	D-30	SC-0185-1230	Screw(3/16" n = 32)	Substitution	01. 10	SC-0185-4124	
83	D-31	SC-0186-1230	Screw(3/16" n = 32)	Substitution	01. 10	SC-0186-4118	
84	D-33	SC-0543-2302	Screw(11/32" n = 28)	Substitution	01. 10	SC-0175-4522	
85	D-34	06-138A-7400	Feed Cam	Substitution	01. 10	06-038A-7400	
86	D-35	06-138A-740L	Feed Cam	Substitution	01. 10	06-038A-740L	
87	D-42	S-0330-7400	Screw(15/64" n = 28)	Substitution	01. 10	SC-0330-4422	
88	D-44	SC-0542-1230	Screw(11/64" n = 40)	Substitution	01. 10	SC-0542-4515	
89	D-45	02-121A-1230	Collar For D-47	Substitution	01. 10	02-021A-1230	
90	D-47	06-129A-7400	Feed Regulator Shaft	Substitution	01. 10	06-029A-7400	
91	D-49	SC-0543-2302	Screw(11/64" n = 40)	Substitution	01. 10	SC-0543-4525	
92	D-52	06-137A-7400	Level Feed Connecting Link	Substitution	01. 10	06-037A-7400	
93	D-58	SC-0549-2302	Screw(1/8" n = 44)	Substitution	01. 10	SC-0549-2125	
94	D-59	06-141A-7400	Level Feed Crank	Substitution	01. 10	05-041A-7400	
95	D-60	06-141A-740L	Level Feed Crank	Substitution	01. 10	06-041A-740L	
96	D-61	SC-0253-7400	Screw(1/4" n = 28)	Substitution	01. 10	SC-0253-4118	
97	D-62	06-179A-5607	Feed Rock Shaft	Substitution	01. 10	06-079A-5607	
98	D-63	06-139A-7400	Feed Rock Shaft Bushing(R)	Substitution	01. 10	06-039A-7400	
99	D-64	SC-0514-7400	Screw(15/64" n = 28)	Substitution	01. 10	SC-0514-4515	
100	D-65	06-142A-7400	Feed Rock Shaft Collar	Substitution	01. 10	06-042A-7400	
101	D-67	06-143A-7400	Feed Rock Shaft Bushing(F)	Substitution	01. 10	06-043A-7400	
102	D-68	SC-0514-7400	Screw(15/64" n = 28)	Substitution	01. 10	SC-0514-4515	
103	D-69	06-147A-7400	Feed Bar Shaft	Substitution	01. 10	06-047A-7400	
104	D-70	SC-0128-7400	Screw(11/64" n = 40)	Substitution	01. 10	SC-0128-4118	
105	D-72	06-145A-7400	Feed Bar	Substitution	01. 10	06-045A-7400	
106	D-75	SC-0142-2302	Screw(1/8" n = 44)	Substitution	01. 10	SC-0142-4122	
107	D-76	SC-0212-7400	Screw(1/8" n = 44)	Substitution	01. 10	SC-0212-4113	
108	D-77	SN-0113-7400	Nut(1/8" n = 44)	Substitution	01. 10	SN-0113-4000	
109	D-78	06-152A-7400	Feed Bar Fork	Substitution	01. 10	06-052A-7400	
110	D-80	SC-0106-7400	Screw(15/64" n = 28)	Substitution	01. 10	SC-0106-4111	
111	D-82	SC-0531-2302	Screw(9/32" n = 28)	Substitution	01. 10	SC-0531-4125	
112	E-1	07-102A-7400	Lower Shaft Bushing(F)	Substitution	01. 10	07-002A-7400	
113	E-3	SC-0507-1230	Screw(15/64" n = 28)	Substitution	01. 10	SC-0507-4515	
114	E-10	07-106A-7400	Lower Shaft Bushing(M)	Substitution	01. 10	07-006A-7400	
115	E-12	SC-0507-1230	Screw(15/64" n = 28)	Substitution	01. 10	SC-0507-4515	
116	E-13	07-101A-7400	Lower Shaft	Substitution	01. 10	07-001A-7400	
117	E-19	SC-0155-7400	Screw(9/32" n = 40)	Substitution	01. 10	SC-0155-4114	
118	E-24	09-130A-7400	Bobbin	Substitution	01. 10	09-030A-7400	
119	E-25	09-130A-740L	Bobbin	Substitution	01. 10	02-030A-740L	
120	E-31	SC-0502-2302	Screw(9/32" n = 40)	Substitution	01. 10	S-0502-4125	

NOTE)

수정 리스트

Changed Parts List

No.	Ref. No.	Parts No.	Name of Parts	Contents	Date	Old Parts No.	Remarks
121	E-32	09-105A-7400	Opener Link	Substitution	01. 10	09-005A-7400	
122	E-33	09-104A-7400	Opener Lever	Substitution	01. 10	09-004A-7400	
123	E-34	09-115A-740L	Opener Lever	Substitution	01. 10	09-015A-740L	
124	E-35	09-106A-7400	Stud Screw For Opener Link	Substitution	01. 10	09-006A-7400	
125	E-36	SN-0115-7400	Nut(3/16" n = 32)	Substitution	01. 10	SN-0115-4000	
126	E-39	SC-0353-7400	Screw(3/16" n = 32)	Substitution	01. 10	SC-0353-4115	
127	E-42	SC-0542-1230	Screw(3/16" n = 28)	Substitution	01. 10	SC-0105-4517	
128	E-46	09-123A-7400	Rotary Hook Bushing(L)	Substitution	01. 10	09-023A-7400	
129	E-47	09-123A-740L	Rotary Hook Bushing(L)	Substitution	01. 10	09-023A-740L	
130	E-48	SC-0542-1230	Screw(3/16" n = 28)	Substitution	01. 10	SC-0105-4517	
131	E-53	09-126A-7400	Pinch Sleeve(U)	Substitution	01. 10	06-025A-7400	
132	E-54	09-127A-7400	Pinch Sleeve(L)	Substitution	01. 10	09-027A-7400	
133	E-55	SC-0331-7400	Screw(15/64" n = 28)	Substitution	01. 10	SC-0331-4122	
134	E-61	SN-0101-7400	Nut(11/64" n = 40)	Substitution	01. 10	SN-0101-4000	
135	E-67	SC-0523-1230	Screw(3/16" n = 28)	Substitution	01. 10	SC-0523-4122	
136	F-3	SC-0160-5607	Screw(9/64" n = 40)	Substitution	01. 10	SC-0160-4125	
137	F-6	04-102A-7400	Needle Bar Clamp	Substitution	01. 10	04-002A-7400	
138	F-8	SC-0158-3710	Screw(9/64" n = 40)	Substitution	01. 10	SC-0158-4122	
139	F-18	04-111A-7400	Needle Bar Rock Shaft Bushing(F)	Substitution	01. 10	04-011A-7400	
140	F-19	04-110A-7400	Needle Bar Rock Shaft	Substitution	01. 10	04-010A-7400	
141	F-20	04-114A-7400	Needle Bar Rock Shaft Bushing(R)	Substitution	01. 10	04-014A-7400	
142	F-21	04-119A-7400	Needle Bar Rock Shaft Connecting Rod	Substitution	01. 10	04-019A-7400	
143	F-25	SC-0531-2302	Screw(9/64" n = 40)	Substitution	01. 10	SC-0531-4125	
144	F-26	04-115A-7400	Needle Bar Rock Link	Substitution	01. 10	04-015A-7400	
145	F-28	SN-0109-3710	Nut(5/16" n = 24)	Substitution	01. 10	SN-0109-4000	
146	F-29	04-117A-7400	Needle Bar Connecting Crank	Substitution	01. 10	04-017A-7400	
147	F-30	SC-0253-7400	Screw(1/4" n = 28)	Substitution	01. 10	SC-0253-4118	
148	G-9	SC-0502-2302	Screw(9/64" n = 40)	Substitution	01. 10	SC-0502-4125	
149	G-14	SC-0502-2302	Screw(9/64" n = 40)	Substitution	01. 10	SC-0502-4125	
150	G-21	SC-0531-2302	Screw(9/64" n = 40)	Substitution	01. 10	SC-0531-4125	
151	G-27	SC-0531-2302	Screw(9/64" n = 40)	Substitution	01. 10	SC-0531-4125	
152	G-30	SC-0518-2302	Screw(9/64" n = 40)	Substitution	01. 10	SC-0518-4119	
153	G-34	SC-0531-2302	Screw(9/64" n = 40)	Substitution	01. 10	SC-0531-4125	
154	G-38	SC-0531-2302	Screw(9/64" n = 40)	Substitution	01. 10	SC-0531-4125	
155	G-42	SC-0531-2302	Screw(9/64" n = 40)	Substitution	01. 10	SC-0531-4125	
156	G-44	SC-0531-2302	Screw(9/64" n = 40)	Substitution	01. 10	SC-0531-4125	
157	G-50	SC-0531-2302	Screw(9/64" n = 40)	Substitution	01. 10	SC-0531-4125	
158	H-9	SC-0118-7400	Screw(1/4" n = 24)	Substitution	01. 10	SC-0118-4119	
159	H-15	02-130A-740L	Bobbin	Substitution	01. 10	02-030A-740L	
160	H-14	09-130A-7400	Bobbin	Substitution	01. 10	09-030A-7400	

NOTE)

수정 리스트

Changed Parts List

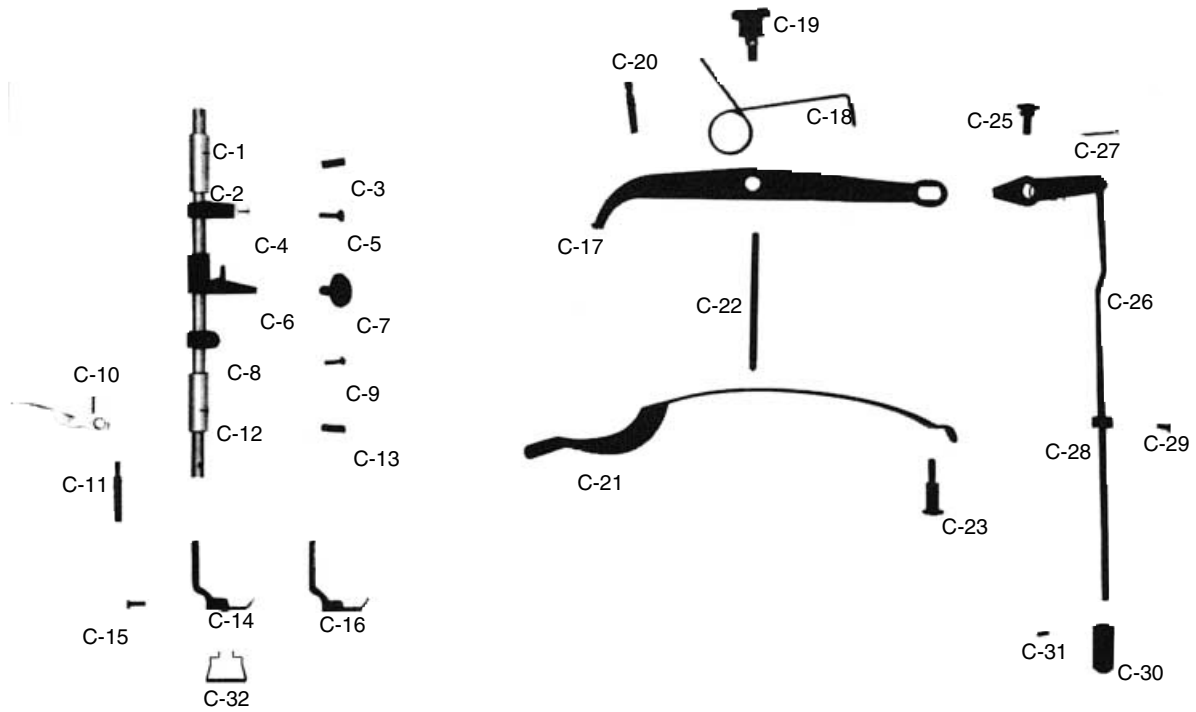
No.	Ref. No.	Parts No.	Name of Parts	Contents	Date	Old Parts No.	Remarks
241	C-14	05-020A-7400	Presser Foot 1/4"	Substitution	02. 01	05-010A-7400	02. 1/4
242	C-32	01-101C-7500	Needle Guide	Change of Blue Point	02. 01		02. 1/4
243	D-22	06-217A-7400	Link For Reverse Lever S/P	Substitution	02. 01	06-117A-7400	02. 1/4
244	H-15	02-130A-740L	Bobbin	Additional Parts	02. 02	02-130A-740L	02. 1/4
245	H-14	09-130A-7400	Bobbin	Additional Parts	02. 03	09-130A-7400	02. 1/4
246	D-62	06-179A-740L	Feed Rock Shaft	Change of Blue Point	02. 06	06-179A-5607	02. 2/4
247	D-12	06-104A-740L	Feed Regulator	Substitution	02. 06	06-004A-7400	02. 2/4
248	D-40	06-128A-7400	Feed Regulator Shaft Crank	Substitution	02. 08	06-028A-7400	02. 2/4
249	H-26	60-301A-7400	Belt Cover(Ass'y)	Additional Parts	02. 09		02. 2/4
250	H-26-1	SC-0498-3710	Screw(11/64" n=40)	Additional Parts	02. 09		02. 2/4
251	H-26-2	SC-0543-2302	Screw(11/64" n=40)	Additional Parts	02. 09		02. 2/4
252	H-26-3	60-004A-2350	Belt Cover "D"	Additional Parts	02. 09		02. 2/4
253	H-26-4	60-007A-7400	Belt Cover "A"	Additional Parts	02. 09		02. 2/4
254	H-26-5	60-008A-7400	Belt Cover "C"	Additional Parts	02. 09		02. 2/4
255	H-26-6	60-009S-7400	Supporting Screw(Small)	Additional Parts	02. 09		02. 2/4
256	H-26-7	60-010S-7400	Supporting Screw(Large)	Additional Parts	02. 09		02. 2/4
257	H-26-8	91-002S-3400	Screw	Additional Parts	02. 09		02. 2/4
258	D-50	06-131A-7400	Slide Block	Substitution	02. 09	06-031A-7400	02. 2/4
259	F-15	04-107A-7400	Needle Bar Guide Plate	Substitution	02. 12	04-007A-7400	02. 4/4
260	C-32	01-101C-7500	Finger Guard	Additional Parts	02. 12		02. 4/4
261	D-39	06-135A-740L	Feed Cam Connecting Rod	Substitution	03. 02	06-035A-740L	03. 1/4
262	F-1	04-101A-7500	Needle Bar	Substitution	03. 06	04-001A-7500	03. 2/4
263	D-38	06-135A-7400	Feed Cam Connecting Rod	Substitution	03. 06	06-035A-7400	03. 2/4
264	H-17	91-102C-1230	Driver(L)	Substitution	03. 06	91-002C-1230	03. 2/4
265	H-18	91-103C-1230	Driver(S, M)	Substitution	03. 06	91-003C-1230	03. 2/4
266	H-2	91-106C-2700	Sewing Machine Cover	Substitution	03. 08	91-006C-2700	03. 3/4
267	H-2	91-106C-2700	Head Cover	Substitution	04. 01	91-013C-1230	04. 1/27
268	H-4	91-002C-7400	Oil	Substitution	04. 01	91-011C-1230	04. 1/27
269	H-5	91-011C-1230	Oil Receiver	Substitution	04. 01	91-002C-7400	04. 1/27
270							
271							
272							
273							
274							
275							
276							
277							
278							
279							
280							

NOTE)



Presser Foot & Knee Lifting Mechanism

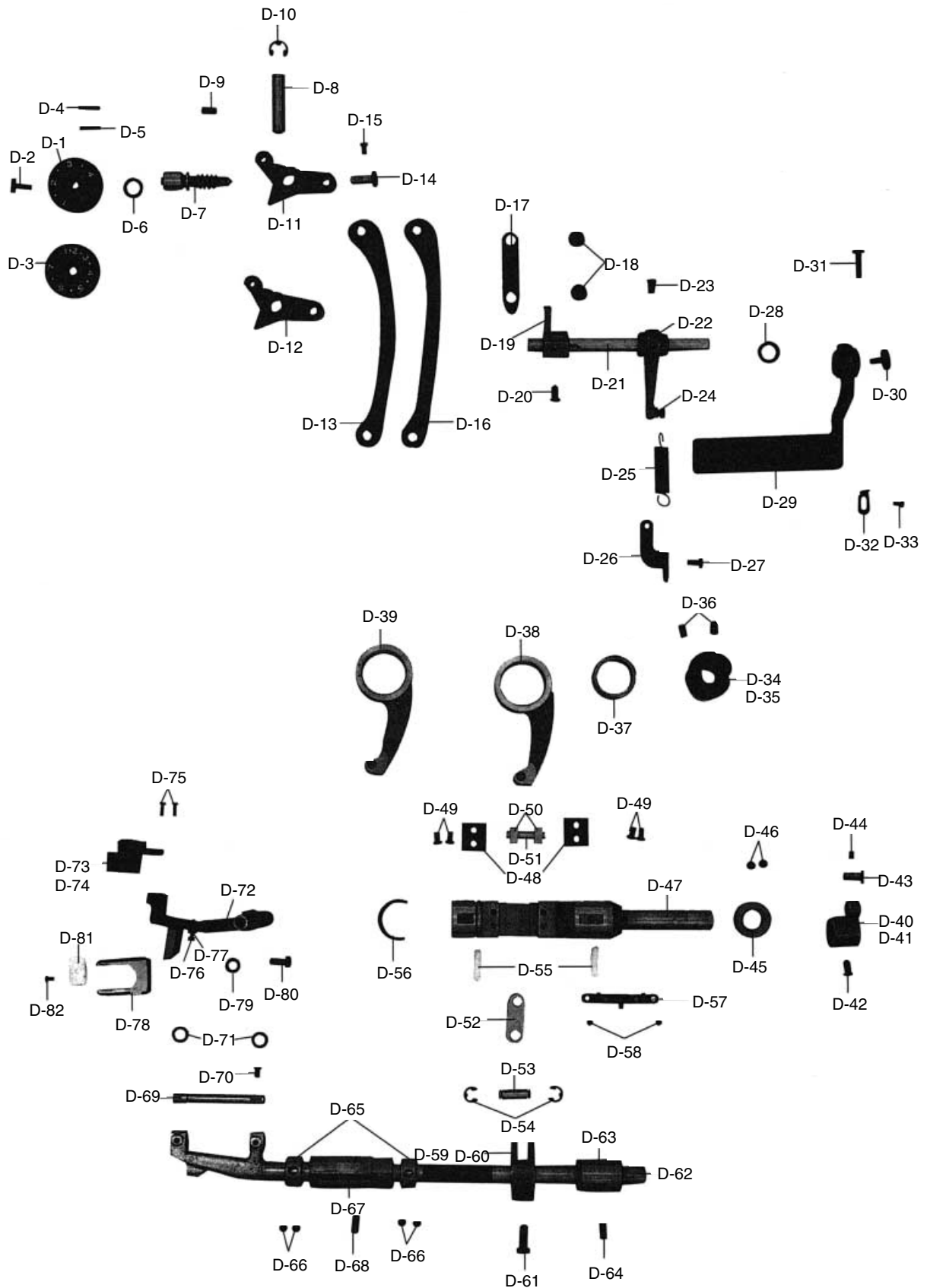
노루발 및 무릎 올림 관계



Ref. No.	Parts No.	Note	Name of Parts	품 명	Q' ty		Assembly No.
					KM-740	KM-740BL	
C-1	05-101A-7400		Presser Bar	누름대	1	1	
C-2	05-102A-7400		Presser Bar Bushing(U)	누름대 상 붓싱	1	1	
C-3	SC-0507-1230		Screw(15/64" n=28)	상축 붓싱 고정 나사(15/64" n=28)	1	1	
C-4	05-103A-7400		Presser Bar Holder	누름대 잡이(K3300)	1	1	
C-5	SC-A174-4122		Screw(11/64" n=40)	홈볼이 납작 작은나사(11/64" n=40)	1	1	
C-6	05-104A-7400		Presser Bar Bracket	누름대 올리기 브라켓(K008)	1	1	
C-7	05-005S-7400		Stud Screw for C-6	누름대 올리기 단나사	1	1	
C-8	05-008A-7400		Hook for Presser Bar Plate Spring	누름대 판 스프링 걸이(K009)	1	1	
C-9	SC-0158-3710		Screw(9/64" n=40)	면판 쥘나사(9/64" n=40)	1	1	
C-10	05-006A-7400		Presser Bar Lifter	누름대 올리기	1	1	
C-11	05-007S-7400		Hinge Pin for C-10	누름대 올리기 힌지 나사	1	1	
C-12	05-009A-7400		Presser Bar Bushing(L)	누름대 하 붓싱	1	1	
C-13	SC-0507-1230		Screw(15/64" n=28)	상축 붓싱 고정 나사(15/64" n=28)	1	1	
C-14	05-020A-7400		Presser Foot 1/4"	노루발 1/4	1		
C-15	SC-0315-2302		Screw(9/64" n=40)	노루발 쥘나사(9/64" n=40)	1	1	
C-16	05-010A-740L		Presser Foot 1/4	노루발 1/4		1	
C-17	05-011A-7400		Knee Lifting Lever	무릎올림 레버	1	1	
C-18	05-014G-7400		Knee Lifter Lever Spring	무릎올림 레버 스프링	1	1	
C-19	05-013S-7400		Stud Screw for C-17	무릎올림 레버 힌지 나사	1	1	
C-20	05-012S-7400		Stopper for C-18	무릎올림 레버 스프링 걸이 나사	1	1	
C-21	05-116G-7400		Presser Bar Plate Spring	누름대 판 스프링	1	1	
C-22	05-015S-7400		Presser Adjusting Screw	압력 조절 나사	1	1	
C-23	05-017S-7400		Hinge Screw for C-21	누름대판 스프링 단나사	1	1	
C-24	05-018C-7400		Knee Lifter Link	무릎올림 레버 연결 링크	1	1	
C-25	05-019S-7400		Stud Screw for C-24	연결 링크 단나사	1	1	
C-26	05-012C-7400		Knee Lifting Rod	무릎 올림봉	1	1	
C-27	05-020P-2302		Pin for C-26	분할 핀	1	1	
C-28	05-021A-7400		Collar for C-26	무릎 올림봉 카라	1	1	
C-29	SC-0128-7400		Screw(11/64" n=40)	인봉 카라 쥘나사(11/64" n=40)	1	1	
C-30	05-022A-7400		Knee Lifting Roller Assembly	로울러(조)	1	1	
C-31	SC-0542-1230		Screw(11/64" n=40)	실 낮추기 고정 나사(11/64" n=40)	1	1	
C-32	01-101C-7500		Finger Guide	안전 가이드	1	1	

D

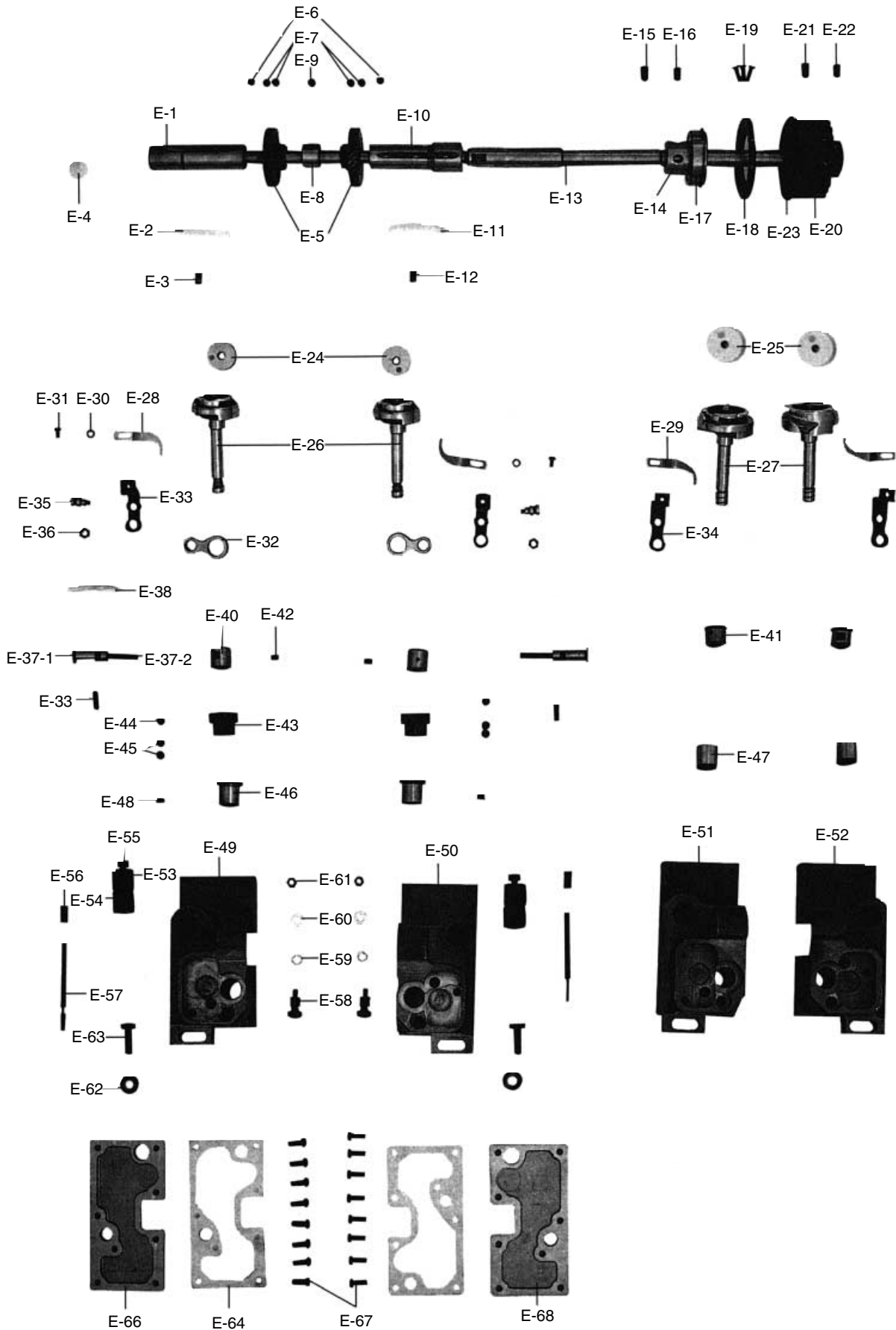
Feed Mechanism 피이드 관계





Ref. No.	Parts No.	Note	Name of Parts	품명	Q'ty		Assembly No.
					KM-740	KM-748L	
D-1	06-013C-7400		Length Control Dial Plate(4)	다이얼 숫자판(4)	1		
D-2	SC-0193-1230		Screw(3/16" n=28)	다이얼 판 쥘나사(3/16" n=28)	1	1	
D-3	06-013M-740L		Length Control Dial Plate(7)	다이얼 숫자판(7)		1	
D-4	06-012P-7400		Pin for D-1, 3	다이얼 핀	1	1	
D-5	06-027G-7400		Spring for D-4	다이얼 스프링	1	1	
D-6	06-010R-1230		O-Ring for D-7	다이얼 축 오링	1	1	
D-7	06-010A-7400		Feed Regulator Shaft	다이얼 축	1	1	
D-8	06-002P-7400		Feed Regulator Stud	피이드 조절기 힌지핀	1	1	
D-9	SC-0507-1230		Screw(15/64" n=28)	상축 붓싱 고정 나사(15/64" n=28)	1	1	
D-10	06-003C-7400		E-Ring(φ7)	피이드 조절기 힌지핀 E링(φ7)	1	1	
D-11	06-104A-7400		Feed Regulator	피이드 조절기(KSM001)	1		
D-12	06-104A-740L		Feed Regulator	피이드 조절기		1	
D-13	06-025A-740L		Feed Regulator Connecting Rod	절환기 연결 로드	1		
D-14	06-026P-7400		Stud Pin(Large) For D-13, 16	절환기 연결 로드 핀(A)	1	1	
D-15	SC-0128-7400		Screw(11/64" n=40)	인봉 카라 쥘나사(11/64" n=40)	1	1	
D-16	06-025A-7400		Feed Regulator Connecting Rod	절환기 연결 로드	1		
D-17	06-005C-7400		Feed Regulator Connecting Link	피이드 조절기 연결링크	1	1	
D-18	06-006S-7400		Stud Screw For D-17	피이드 조절기 연결링크 단나사	2	2	
D-19	06-107A-7400		Reverse Lever Shaft Crank	역진 레버 크랭크	1	1	
D-20	SC-0330-7400		Screw(15/64" n=28)	역진 레버 크랭크 쥘나사(15/64" n=28)	1	1	
D-21	06-116A-7400		Reverse Lever Shaft	역진 레버 축	1	1	
D-22	06-217A-7400		Link For Reverse Lever Spring	역진 레버 축 스프링 걸이	1	1	
D-23	SC-0122-1230		Screw(15/64" n=28)	역진 레버 축 스프링 걸이 쥘나사(15/64" n=28)	1	1	
D-24	06-018P-7400		Roller For Spring Hook	레버축 스프링 걸이 핀	1	1	
D-25	06-023G-7400		Reverse Lever Return Spring	역진 레버 스프링	1	1	
D-26	06-024C-7400		Hook For D-25	역진 레버 스프링 걸이	1	1	
D-27	06-024S-7400		Screw(3/16" n=32)	홈볼이 냄비 작은나사(3/16" n=32)	1	1	
D-28	06-021W-7400		Washer For D-29	역진 레버 와셔	1	1	
D-29	06-020A-7400		Reverse Lever	역진 레버	1	1	
D-30	SC-0185-1230		Screw(3/16" n=32)	레버 덮개 나사(3/16" n=32)	1	1	
D-31	SC-0186-1230		Screw(3/16" n=32)	역진 레버 고정 나사(3/16" n=32)	1	1	
D-32	06-022C-7400		Reverse Lever Stopper	역진 레버 스톱퍼	1	1	
D-33	SC-0543-2302		Screw(11/64" n=40)	톱커버 힌지 고정나사(11/64" n=40)	1	1	
D-34	06-138A-7400		Feed Cam	피이드 캠	1		
D-35	06-138A-740L		Feed Cam	피이드 캠		1	
D-36	SC-A308-4517		Screw(15/64" n=28)	육각구멍볼이 멈춤나사(15/64" n=28)	2	2	
D-37	06-036A-7400		Needle Bearing	니들 베어링	1	1	
D-38	06-135A-7400		Feed Cam Connecting Rod	베어링 로드	1		
D-39	06-135A-740L		Feed Cam Connecting Rod	베어링 로드		1	
D-40	06-128A-7400		Feed Regulator Shaft Crank	절환기 크랭크	1		
D-41	06-128A-740L		Feed Regulator Shaft Crank	절환기 크랭크		1	
D-42	SC-0330-7400		Screw(15/64" n=28)	역진 레버 크랭크 쥘나사(15/64" n=28)	1	1	
D-43	06-112A-7500		Stud Pin(Small) for D-13, 16	절환기 연결 로드 핀(B)	1	1	
D-44	SC-0542-1230		Screw(11/64" n=40)	인봉 카라 쥘나사(11/64" n=40)	1	1	
D-45	02-121A-1230		Collar For D-47	상축 카라	1	1	
D-46	SC-A129-4515		Screw(1/4" n=40)	홈볼이 멈춤나사(1/4" n=40)	2	2	
D-47	06-129A-7400		Feed Regulator Shaft	절환기 몸체	1	1	
D-48	06-030C-7400		Slide Block Guide Plate	슬라이드 블럭 안내판	2	2	
D-49	SC-0543-2302		Screw(11/64" n=40)	톱커버 힌지 고정 나사(11/64" n=40)	4	4	
D-50	06-131A-7400		Slide Block	슬라이드 블럭	2	2	
D-51	06-032P-7400		Slide Block Shaft	베어링 로드 연결핀	1	1	
D-52	06-137A-7400		Level Feed Connecting Link	수평 피이드 연결 링크(KS007)	1	1	
D-53	06-040P-7400		Stud For D-59, 60	연결 핀	1	1	
D-54	06-020C-7400		E-Ring(φ6)	E링(φ6)	2	2	
D-55	06-033M-7400		Felt For D-47	절환기 felt	2	2	
D-56	06-034W-7400		Stop Ring C	절환기 와셔	1	1	
D-57	44-025C-7400		Wick Holder For D-47	절환기 유실잡이	1	1	
D-58	SC-0549-2302		Screw(1/8" n=44)	바늘대 후레임 실걸이 나사(1/8" n=44)	2	2	
D-59	06-141A-7400		Level Feed Crank	수평밀대 크랭크	1		
D-60	06-141A-740L		Level Feed Crank	수평밀대 크랭크		1	
D-61	SC-0253-7400		Screw(1/4" n=28)	요동 크랭크 쥘나사(1/4" n=28)	1	1	
D-62	06-179A-740L		Feed Rock Shaft	수평밀대	1	1	
D-63	06-139A-7400		Feed Rock Shaft Bushing(R)	수평밀대 후 붓싱	1	1	
D-64	SC-0514-7400		Screw(15/64" n=28)	상축 붓싱 고정 나사(15/64" n=28)	1	1	
D-65	06-142A-7400		Feed Rock Shaft Collar	수평밀대 카라	2	2	
D-66	SC-A129-4515		Screw(1/4" n=40)	홈볼이 멈춤나사(1/4" n=40)	4	4	
D-67	06-143A-7400		Feed Rock Shaft Bushing(F)	수평밀대 전 붓싱	1	1	
D-68	SC-0514-7400		Screw(15/64" n=28)	상축 앞 붓싱 고정 나사(15/64" n=28)	1	1	
D-69	06-147A-7400		Feed Bar Shaft	톱니 받침축	1	1	
D-70	SC-0128-7400		Screw(11/64" n=40)	인봉 카라 쥘나사(11/64" n=40)	1	1	
D-71	06-046W-7400		Washer For D-69	톱니 받침축 와셔	2	2	
D-72	06-145A-7400		Feed Bar	톱니 받침	1	1	
D-73	06-054A-7400		Feed Dog 1/4	톱니 1/4 (φ2)	1	1	
D-74	06-075A-750L		Feed Dog 1/4	톱니 1/4 (φ2.5)	1		
D-75	SC-0142-2302		Screw(1/8" n=44)	톱니 쥘나사(1/8" n=44)	2	2	
D-76	SC-0212-7400		Screw(1/8" n=44)	톱니 높이 조절나사(1/8" n=44)	1	1	
D-77	SN-0113-7400		Nut(1/8" n=44)	톱니 받침 너트(1/8" n=44)	1	1	
D-78	06-152A-7400		Feed Bar Fork	톱니 받침 포크(KSM004)	1	1	
D-79	06-051W-7400		Washer For D-78	포크 쥘나사 와셔	1	1	
D-80	SC-0106-7400		Screw(15/64" n=28)	포크 쥘나사 (육각) (15/64" n=28)	1	1	
D-81	06-053M-7400		Feed Bar Fork Felt	포크 felt	1	1	
D-82	SC-0531-2302		Screw(9/64" n=40)	윗뚜껑 고정판 고정 나사(소) (9/64" n=40)	1	1	

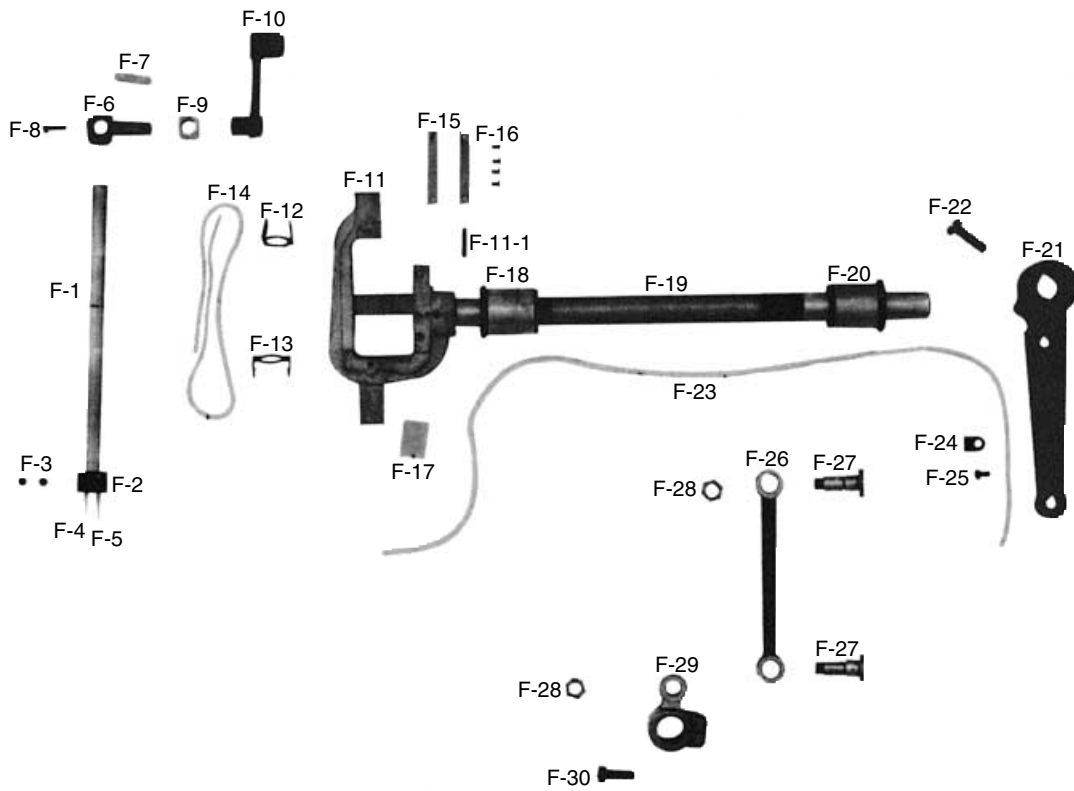
Lower Shaft & Rotary Hook Mechanism 하축 및 로터리 훅 관계





Ref. No.	Parts No.	Note	Name of Parts	품 명	Q' ty		Assembly No.
					KM-740	KM-748L	
E-1	07-102A-7400		Lower Shaft Bushing(F)	하축 앞 붓싱	1	1	
E-2	07-004M-7400		Felt for E-1	하축 앞 붓싱 헬트(5-4)	1	1	
E-3	SC-0507-1230		Screw(15/64" n=28)	상축 붓싱 쥘나사(15/64" n=28)	1	1	
E-4	07-003M-7400		Felt	하축 앞 붓싱 마개 헬트(5-3)	1	1	
E-5	09-001A-7400		Lower Shaft Spiral Gear	기어(대)	2	2	
E-6	SC-A117-4417		Screw(1/4" n=40)	홈볼이 멈춤나사(1/4" n=40)	2	2	
E-7	SC-A308-4517		Screw(1/4" n=40)	홈볼이 멈춤나사(1/4" n=40)	4	4	
E-8	07-005A-7400		Vertical Feed Eccentric Cam	편심캠	1	1	
E-9	SC-A550-4517		Screw(1/4" n=40)	홈볼이 멈춤나사(1/4" n=40)	1	1	
E-10	07-106A-7400		Lower Shaft Bushing(M)	하축 중 붓싱	1	1	
E-11	07-004M-7400		Felt For E-10	하축 앞 붓싱 헬트(5-4)	1	1	
E-12	SC-0507-1230		Screw(15/64" n=28)	상축 붓싱 고정 나사(15/64" n=28)	1	1	
E-13	07-101A-7400		Lower Shaft	하축	1	1	
E-14	07-007A-7400		Bearing Bushing	베어링 홀더	1	1	
E-15	SC-A117-4417		Screw(1/4" n=40)	육각구멍볼이 멈춤나사(1/4" n=40)	1	1	
E-16	SC-A308-4517		Screw(1/4" n=40)	육각구멍볼이 멈춤나사(1/4" n=40)	1	1	
E-17	07-008A-7400		Bearing (6203NR)	하축 베어링 (6203NR)	1	1	
E-18	07-009A-7400		Bearing Presser	베어링 커버	1	1	
E-19	SC-0155-7400		Screw(9/64" n=40)	베어링 커버 쥘나사(9/64" n=40)	3	3	
E-20	07-011A-7400		Timing Belt Pulley(L)	타이밍 벨트 풀리(下)	1	1	
E-21	SC-A117-4417		Screw(1/4" n=40)	육각구멍볼이 멈춤나사(1/4" n=40)	1	1	
E-22	SC-A308-4517		Screw(1/4" n=40)	육각구멍볼이 멈춤나사(1/4" n=40)	1	1	
E-23	02-015C-7400		Timing Belt Pulley Ring	후렌치	1	1	
E-24	02-130A-7400		Bobbin	보빈	1		
E-25	02-130A-740L		Bobbin	보빈		1	
E-26	09-029A-7400		Hook	가마 HSH12-15L	1		
E-27	09-029A-740L		Hook	가마 HSH12-15MM		1	
E-28	09-003A-7400		Bobbin Case Opener	보빈 케이스 오픈너	1		
E-29	09-014A-740L		Bobbin Case Opener	보빈 케이스 오픈너		1	
E-30	02-019W-1230		Washer For E-28, 29	상축 헬트 와셔	2	2	
E-31	SC-0502-2302		Screw(9/64" n=40)	톱 커버 고정판 고정나사(대) (9/64" n=40)	2	2	
E-32	09-105A-7400		Opener Link	오픈너 링크	2	2	
E-33	09-104A-7400		Opener Lever	오픈너 레버	2		
E-34	09-115A-740L		Opener Lever	오픈너 레버		2	
E-35	09-106A-7400		Stud Screw For Opener Link	오픈너 링크 축	2	2	
E-36	SN-0115-7400		Nut(3/16" n=32)	오픈너 너트(3/16" n=32)	2	2	
E-37-1	09-008A-7400		Opener Lever Shaft	오픈너 레버 축	2	2	
E-37-2	09-010C-7400		Oil Pipe	오일 파이프(5-29)	2	2	
E-38	44-0000-1230		Oil Wick	유심	1	1	
E-39	SC-0353-7400		Screw(3/16" n=32)	오일 파이프 나사(3/16" n=32)	2	2	
E-40	09-125A-7400		Rotary Hook Bushing(U)	가마 축 붓싱(상)	2		
E-41	09-125A-740L		Rotary Hook Bushing(U)	가마 축 붓싱(상)		2	
E-42	SC-0542-1230		Screw(3/16" n=28)	가마 축 붓싱 쥘나사(3/16" n=28)	2	2	
E-43	09-002A-7400		Rotary Hook Gear	기어(소)	2	2	
E-44	SC-A550-4517		Screw(1/4" n=40)	홈볼이 멈춤나사(1/4" n=40)	2	2	
E-45	SC-A550-4517		Screw(1/4" n=40)	홈볼이 멈춤나사(1/4" n=40)	4	4	
E-46	09-123A-7400		Rotary Hook Bushing(L)	가마 축 붓싱(하)	2		
E-47	09-123A-740L		Rotary Hook Bushing(L)	가마 축 붓싱(하)		2	
E-48	SC-0542-1230		Screw(3/16" n=28)	가마 축 붓싱 쥘나사(3/16" n=28)	2	2	
E-49	09-131A-7400		Hook Base(L)	가마 토대(좌)	1		
E-50	09-140A-7400		Hook Base(R)	가마 토대(우)	1		
E-51	09-031A-740L		Hook Base(L)	가마 토대(좌)		1	
E-52	09-040A-740L		Hook Base(R)	가마 토대(우)		1	
E-53	09-126A-7400		Pinch Sleeve(U)	가마 토대 슬리브(상)	2	2	
E-54	09-127A-7400		Pinch Sleeve(L)	가마 토대 슬리브(하)	2	2	
E-55	SC-0331-7400		Screw(15/64" n=28)	가마 토대 슬리브 고정나사(15/64" n=28)	2	2	
E-56	09-036C-7400		Oil Pipe For E-57	오일 파이프(5-46)	2	2	
E-57	09-035C-7400		Oil Gauge	오일 게이지	2	2	
E-58	09-038S-7400		Oil Adjusting Screw	유량 조절나사/마개	2	2	
E-59	07-011W-1230		Spring Washer For E-58	가마 잡이 와셔	2	2	
E-60	01-023C-3710		Washer For E-58	와셔 5	2	2	
E-61	SN-0101-7400		Nut(11/64" n=40)	너트(11/64" n=40)	2	2	
E-62	09-034W-7400		Washer For E-49, 50, 51, 52	혹 받침 와셔	2	2	
E-63	02-020S-7400		Screw For E-49, 50, 51, 52	요동 로드 쥘나사	2	2	
E-64	09-032R-7400		Hook Base Cover Gasket	가마 토대 패킹	2	2	
E-65	09-033A-7400		Hook Base Cover(L)	가마 받침(좌) 2	1	1	
E-66	09-041A-7400		Hook Base Cover(R)	가마 받침(우) 1	1	1	
E-67	SC-0523-1230		Screw(3/16" n=28)	무릎 올림 링크 고정나사(3/16" n=28)	16	16	

Needle Bar Rocking Mechanism 바늘대 요동 관계

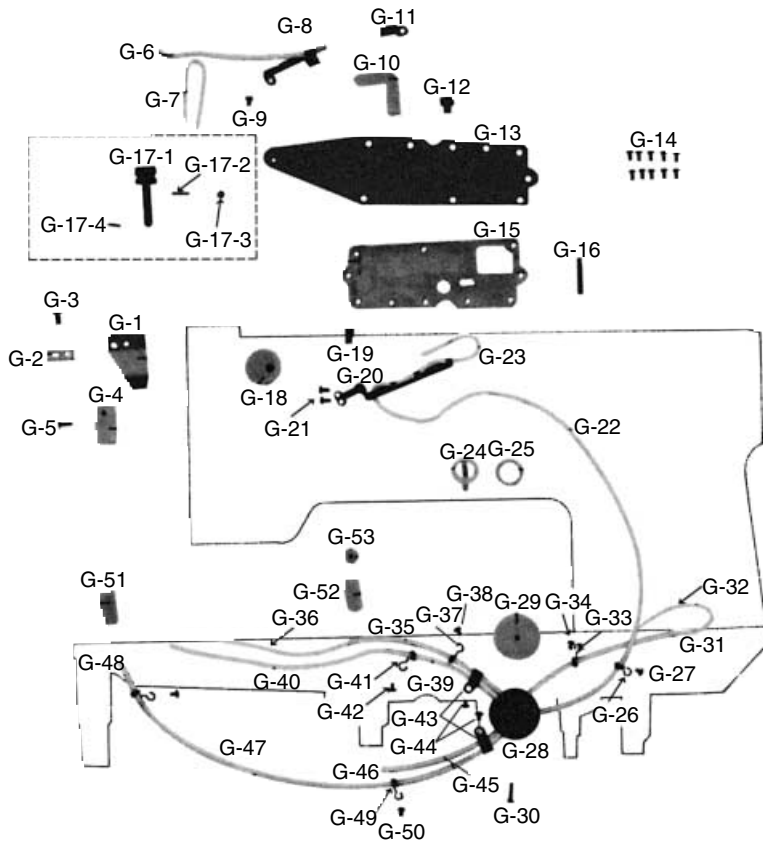


Ref. No.	Parts No.	Note	Name of Parts	품 명	Q' ty		Assembly No.
					KM-740	KM-740BL	
F-1	04-101A-7500		Needle Bar	바늘대	1	1	
F-2	02-021A-7400		Needle Clamp 1/4	침지 1/4	1	1	
F-3	SC-0160-5607		Screw(9/64" n=40)	바늘 쥘나사(9/64" n=40)	2	2	
F-4			Needle(740)	바늘	2		
F-5			Needle(740BL)	바늘		2	
F-6	04-102A-7400		Needle Bar Clamp	바늘대 잡이	1	1	
F-7	06-033M-7400		Felt For F-6	절환기 헬트	1	1	
F-8	SC-0158-3710		Screw(9/64" n=40)	면판 쥘나사(9/64" n=40)	1	1	
F-9	04-105A-7400		Needle Bar Guide Slide Block	바늘대 안내 블록	1	1	
F-10	04-004A-7400		Needle Bar Crank	바늘대 크랭크	1	1	
F-11	04-006A-7400		Needle Bar Frame	바늘대 후레임	1	1	
F-11-1	04-009P-7400		Taper Pin	바늘대 후레임 고정핀	1	1	
F-12	04-012C-7400		Needle Bar Wick Holder(U)	요동축 유심잡이(上)	1	1	
F-13	04-013C-7400		Needle Bar Wick Holder(L)	요동축 유심잡이(下)	1	1	
F-14	44-0000-1230		Oil Wick	유심	1	1	
F-15	04-107A-7400		Needle Bar Guide Plate	보강판	2	2	
F-16	SC-A116-4120		Screw(3/32" n=56)	흡블이 등근집시 작은나사(3/32" n=56)	4	4	
F-17	44-107M-7900		Felt For Needle Bar Frame	바늘대 급유 헬트(A)	1	1	
F-18	04-111A-7400		Needle Bar Rock Shaft Bushing(F)	요동축 앞 붓싱	1	1	
F-19	04-110A-7400		Needle Bar Rock Shaft	요동축	1	1	
F-20	04-114A-7400		Needle Bar Rock Shaft Bushing(R)	요동축 뒷 붓싱	1	1	
F-21	04-119A-7400		Needle Bar Rock Shaft Connecting Rod	바늘대 요동축 연결로드	1	1	
F-22	04-020S-7400		Screw For F-21	요동 로드 쥘나사	1	1	
F-23	44-0000-1230		Oil Wick	유심	1	1	
F-24	04-021C-7400		Wick Holder	유심잡이(2-51)	1	1	
F-25	SC-0531-2302		Screw(9/64" n=40)	윗뚜껑 고정판 고정 나사(대) (9/64" n=40)	1	1	
F-26	04-115A-7400		Needle Bar Rock Link	바늘대 요동링크	1	1	
F-27	04-016S-7400		Stud Screw For F-26	요동 링크 단나사	2	2	
F-28	SN-0109-3710		Nut(5/16" n=24)	지그재그 조절 스톱퍼 축너트(5/16" n=24)	2	2	
F-29	04-017A-7400		Needle Bar Connecting Crank	요동 크랭크	1	1	
F-30	SC-0253-7400		Screw(1/4" n=28)	요동 크랭크 쥘나사(1/4" n=28)	1	1	



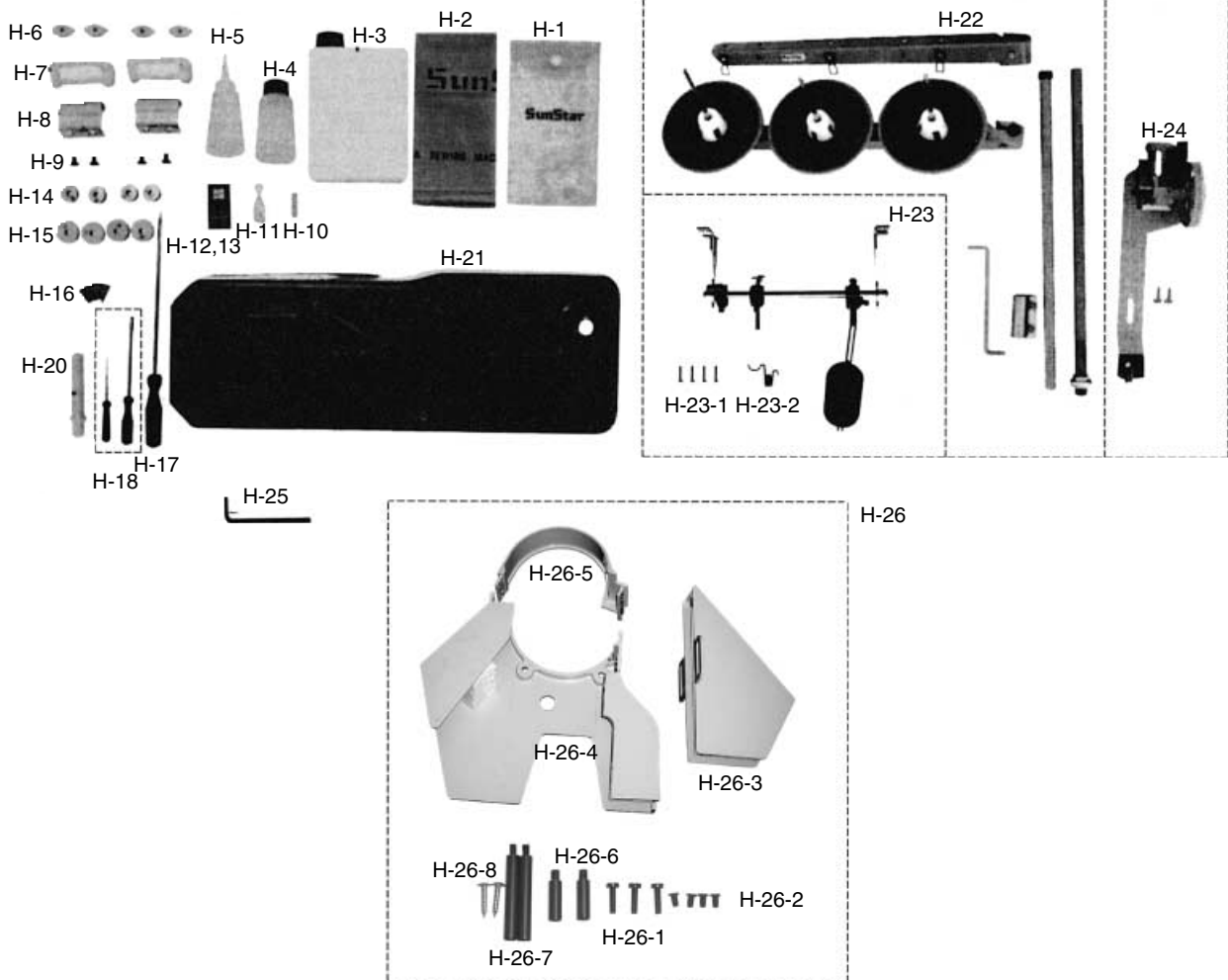
Lubrication

급유 관계












Ref. No.	Parts No.	Note	Name of Parts	품 명	Q' ty		Assembly No.
					KM-740	KM-748L	
G-1	44-017C-7400		Oil Cover	기름막이 판	1	1	
G-2	44-018C-8130		Oil Cover Presser	기름막이 누름판	1	1	
G-3	06-024S-7400		Screw(3/16" n=32)	홈볼이 넵비 작은나사(3/16" n=32)	1	1	
G-4	44-016M-7400		Felt For Thread Take-Up Lever	실채기 급유 felt(6-14)	1	1	
G-5	SC-A156-4118		Screw(9/64" n=40)	홈볼이 넵비 작은나사(9/64" n=40)	1	1	
G-6	44-0000-1230		Oil Wick	유심	1	1	
G-7	44-0000-1230		Oil Wick	유심	1	1	
G-8	44-009G-7400		Spring Plate	오일 조절판 스프링	1	1	
G-9	SC-0502-2302		Screw(9/64" n=40)	윗뚜껑 고정판 고정 나사(대) (9/64" n=40)	1	1	
G-10	44-010M-7400		Felt	오일 탱크 felt(6-6)	1	1	
G-11	44-011C-7400		Felt Presser	유심 felt 고정판(6-7)	1	1	
G-12	44-012R-7400		Cap For Oil Inlet	주유구 마개(6-8)	1	1	
G-13	44-001A-7400		Oil Receive Plate	기름 받침 판	1	1	
G-14	SC-0502-2302		Screw(9/64" n=40)	윗뚜껑 고정판 고정 나사(대) (9/64" n=40)	10	10	
G-15	44-013R-7400		Packing For G-13	기름받침 판 패킹	1	1	
G-16	01-017C-7400		Oil Pipe	오일 파이프(1-14)	1	1	
G-17-1	44-006A-7400		Oil Adjusting Knob	오일 조절축	1	1	G-17 Oil Adjusting Knob Assembly
G-17-2	44-007P-7400		Oil Adjusting Knob Pin(A)	오일 조절축 핀(대)	1	1	
G-17-3	44-008W-7400		Oil Adjusting Knob(A) Washer	오일 조절축 와셔	1	1	
G-17-4	44-008P-7400		Oil Adjusting Knob Pin(B)	오일 조절축 핀(소)	1	1	
G-18	02-014M-2302		Felt For Upper Shaft Bushing(F)	상축 급유 felt	1	1	
G-19	44-015C-7400		Oil Guide Tube	오일 안내	1	1	
G-20	44-014C-7400		Wick Holder	오일 유심 안내(6-11)	1	1	
G-21	SC-0531-2302		Screw(9/64" n=40)	윗뚜껑 고정판 고정 나사(소) (9/64" n=40)	2	2	
G-22	44-012C-1230		Oil Tube(Oil Pipe Supporter)	환류 파이프	1	1	
G-23	44-0000-1230		Oil Wick	유심	1	1	
G-24	44-027C-7400		Oil Gauge Window	유창	1	1	
G-25	06-043R-1230		Packing For G-24	유창 오링	1	1	
G-26	44-026G-7400		Tube Holder for G-22	felt잡이 스프링	1	1	
G-27	SC-0531-2302		Screw(9/64" n=40)	윗뚜껑 고정판 고정 나사(소) (9/64" n=40)	1	1	
G-28	44-022C-7400		Oil Tube Supporter	오일 파이프 고정 캡	1	1	
G-29	44-023M-7400		Felt For G-28	베드 오일 felt	1	1	
G-30	SC-0518-7400		Screw(9/64" n=40)	felt 집나사(9/64" n=40)	1	1	
G-31	44-012C-1230		Oil Tube For Feed Rock Shaft Bushing(R)	환류 파이프	1	1	
G-32	44-0000-1230		Oil Wick	유심	1	1	
G-33	44-026G-7400		Tube Holder For G-31	felt잡이 스프링	1	1	
G-34	SC-0531-2302		Screw(9/64" n=40)	윗뚜껑 고정판 고정 나사(소) (9/64" n=40)	1	1	
G-35	44-012C-1230		Oil Tube For Feed Rock Shaft Bushing(F)	환류 파이프	1	1	
G-36	44-0000-1230		Oil Wick	유심	1	1	
G-37	44-026G-7400		Tube Holder For G-35	felt잡이 스프링	1	1	
G-38	SC-0531-2302		Screw(9/64" n=40)	윗뚜껑 고정판 고정 나사(소) (9/64" n=40)	1	1	
G-39	44-012C-1230		Oil Tube For Feed Regulator Shaft	환류 파이프	1	1	
G-40	44-0000-1230		Oil Wick	유심	1	1	
G-41	44-026G-7400		Tube Holder For G-39	felt잡이 스프링	1	1	
G-42	SC-0531-2302		Screw(9/64" n=40)	윗뚜껑 고정판 고정 나사(소) (9/64" n=40)	1	1	
G-43	44-011C-7400		Wick Setting Plate For G-37, 41, 45, 47	유심 felt 고정판(6-7)	2	2	
G-44	SC-0531-2302		Screw(9/64" n=40)	윗뚜껑 고정판 고정 나사(소) (9/64" n=40)	2	2	
G-45	44-012C-1230		Oil Tube For Lower Shaft Bushing(M)	환류 파이프	1	1	
G-46	44-0000-1230		Oil Wick	유심	1	1	
G-47	44-012C-1230		Oil Tube For Lower Shaft Bushing(F)	환류 파이프	1	1	
G-48	44-0000-1230		Oil Wick	유심	1	1	
G-49	44-026G-7400		Tube Holder For G-47	felt잡이 스프링	2	2	
G-50	SC-0531-2302		Screw(9/64" n=40)	윗뚜껑 고정판 고정나사(소) (9/64" n=40)	2	2	
G-51	44-019M-7400		Felt	흑 몸체 전봇싱 felt(6-19)	1	1	
G-52	44-020C-7400		Felt	흑 몸체 전봇싱 felt(6-20)	1	1	
G-53	44-021R-7400		Oil Cap	베드 기름 마개	1	1	



Ref. No.	Parts No.	Note	Name of Parts	품 명	Q' ty		Assembly No.
					KM-740	KM-740BL	
H-1	91-001C-1230		Accessory Bag	액세서리 박스	1	1	
H-2	91-106C-2700		Head Cover	미싱 커버(小)	1	1	
H-3	91-108C-1230		Oil	오일 캔	1	1	
H-4	91-002C-7400		Oiler	유차	1	1	
H-5	91-011C-1230		Oil Receiver	유차병	1	1	
H-6	91-103R-7400		Head Cushion	힌지고무(小)	4	4	
H-7	91-106R-7400		Rubber Cushion For Hinge	힌지고무(大) <White>	2	2	
H-8	91-004C-7400		Head Hinge	힌지 쇠	2	2	
H-9	SC-0118-7400		Screw(1/4" n=24)	힌지 꺾나사(1/4" n=24)	4	4	
H-10	01-024M-7400		Felt	윗실 급유 felt	1	1	
H-11	91-007C-7400		Needle Thread Inserting Guide	실끼기	1	1	
H-12			Needle	바늘	5		
H-13			Needle	바늘		5	
H-14	09-130A-7400		Bobbin	보빈	4		
H-15	02-130A-740L		Bobbin	보빈		4	
H-16			Nail	못	16	16	
H-17	91-102C-1230		Driver(Large)	드라이버(大)	1	1	
H-18	91-103C-1230		Driver(Middle, Small)	드라이버(中, 小)	1	1	
H-20	91-012C-1230		Head Rest	미싱 받침대	1	1	
H-21	91-001A-7400		Oil Pan	오일 팬	1	1	
H-22	91-008A-7400		Thread Stand Assembly	3분 사립봉	1Set	1Set	
H-23	43-007A-7400		Knee Lifting Assembly	무릎올림(組)	1Set	1Set	
H-23-1	91-002S-3400		Set Screw For H-23	목나사	4	4	
H-23-2	43-010G-3400		Spring For H-23	무릎받침 축 리턴 S/P	1	1	
H-24	41-101A-1230		Bobbin Winder Assembly	실감기(組)	1Set	1Set	
H-25	91-003C-2700		L Wrench(3mm)	L렌치(3mm)	1	1	
H-26	60-301A-7400		Belt Cover(Ass'y)	벨트커버(조) - 1Set	1Set	1Set	
H-26-1	SC-0498-3710		Screw(11/64" n=40)	가마잡이 나사(11/64" n=40)	3	3	
H-26-2	SC-0543-2302		Screw(11/64" n=40)	톱카바린지 고정나사(11/64" n=40)	4	4	
H-26-3	60-004A-2350		Belt Cover "D"	벨트커버 "D"	1	1	
H-26-4	60-007A-7400		Belt Cover "A"	벨트커버 "A"	1	1	
H-26-5	60-008A-7400		Belt Cover "C"	벨트커버 "C"	1	1	
H-26-6	60-009S-7400		Supporting Screw(Small)	벨트커버 지지나사(소)	2	2	
H-26-7	60-010S-7400		Supporting Screw(Large)	벨트커버 지지나사(대)	2	2	
H-26-8	91-002S-3400		Screw	340 목나사	2	2	

Gauge Parts

게이지 관제

Gauge Size	Needle Plate		Presser Foot		Feed Dog		Needle Clamp
	KM-740	KM-740BL	KM-740	KM-740BL	KM-740	KM-740BL	KM-740 KM-740BL
	I-A-40  (A-40)	A-A-41  (A-41)	I-C-14  (C-14)	I-C-15  (C-16)	I-D-73  (D-73)	I-D-74  (D-74)	(F-2) 
1/16" (1.6mm)	01-227A-7400	01-527A-740L	05-210A-7400	05-410A-750L	06-254A-7400	06-01SA-750L	02-221A-7400
3/32" (2.4mm)	01-127A-7400	01-127A-740L	05-110A-7400	05-110A-740L	06-154A-7400	06-02SA-750L	02-121A-7400
1/8" (3.2mm)	01-527A-7400	01-227A-740L	05-510A-7400	05-210A-740L	06-554A-7400	06-03SA-750L	02-521A-7400
5/32" (4.0mm)	01-028A-7400	01-028A-740L	05-911A-7400	05-510A-750L	06-69SA-7500	06-04SA-750L	02-922A-7400
3/16" (4.8mm)	01-327A-7400	01-327A-740L	05-310A-7400	05-310A-740L	06-354A-7400	06-05SA-750L	02-321A-7400
1/4" (6.4mm)	01-027A-7400	01-027A-740L	05-010A-7400	05-010A-740L	06-054A-7400	06-07SA-750L	02-021A-7400
5/16" (7.9mm)	01-427A-7400	01-427A-740L	05-410A-7400	05-610A-750L	06-454A-7400	06-08SA-750L	02-421A-7400
3/8" (9.5mm)	01-627A-7400	01-627A-740L	05-610A-7400	05-710A-750L	06-654A-7400	06-09SA-750L	02-621A-7400
7/16" (11.1mm)	01-128A-7400	01-128A-740L	05-112A-7500	05-116A-750L	06-58SA-7500	06-10SA-750L	02-102A-7500
1/2" (12.7mm)	01-827A-7400	01-827A-740L	05-810A-7400	05-810A-750L	06-854A-7400	06-11SA-750L	02-821A-7400
5/8" (15.9mm)	01-727A-7400	01-228A-740L	05-113A-7400	05-910A-750L	06-754A-7400	06-12SA-750L	02-721A-7400
3/4" (19.1mm)	01-328A-7400	01-328A-740L	05-114A-7400	05-117A-750L	06-67SA-7500	06-13SA-750L	02-104A-7500
7/8" (22.2mm)	01-428A-7400	01-428A-740L	05-115A-7500	05-118A-750L	06-68SA-7500	06-14SA-750L	02-105A-7500
1" (1.6mm)	01-927A-7400	01-927A-740L	05-910A-7400	05-111A-750L	06-954A-7400	06-15SA-750L	02-921A-7400
1 1/4" (31.8mm)	01-528A-7400	01-528A-740L	05-116A-7500	05-112A-750L	06-62SA-7500	06-16SA-750L	02-106A-7500
1 1/2" (38.1mm)	01-628A-7400	01-628A-740L	05-117A-7500	05-114A-750L	06-63SA-7500	06-18SA-750L	02-108A-7500



SUNSTAR MACHINERY CO., LTD.

HEAD OFFICE

178-212, GAJWA-DONG, SEO-KU, INCHON, KOREA
TEL : (032) 580-5600 ~ 4 FAX : (032) 584-3020

TRADE OFFICE

178-212, GAJWA-DONG, SEO-KU, INCHON, KOREA
TEL : (032) 580-5740 ~ 60 FAX : (032) 584-3025 ~ 6

OVERSEAS NETWORK

SUNSTAR MACHINERY U.S.A., INC.

11475, N.W. 39TH ST. Miami, Florida 33178, USA
TEL : 1-305-591-9596 FAX : 1-305-591-0661

SUNSTAR MACHINERY HONGKONG LTD.

RM. 1302, Apec Plaza, No. 49 Hoi Yuen RD,
Kwun Tong, Kln. H. K.
TEL : 852-2729-7078, 852-2729-7224 FAX : 852-2729-7573

SUNSTAR MACHINERY SHANG HAI LTD. (CHINA)

#7 Yuangong Rd. Shanghai International Automobiles City
Components Sub-Assembly Industrial Zone Jiading Shaghai China
TEL : 86-21-69576305, 69576306 FAX : 86-21-69576091, 69576093

SUNSTAR MACHINERY GUANG DONG BRANCH (CHINA)

Luosha Daxia 12TH Floor 170 Dong Xing-Road, Dong Guan
Shicheng Qu, Guang Dong, China
TEL : 86-769-249-1610 FAX : 86-769-234-4042

SUNSTAR MACHINERY FUJIAN BRANCH (CHINA)

504, Agricultural Bank Building Shishi Fujian, China
TEL : 86-595-859-8871 FAX : 86-595-859-8872

SUNSTAR MACHINERY QINGDAO BRANCH (CHINA)

Chengyangqu Liutingzhen Chongyanglu Shoufeizhan
Beiduan Shangpinlou Qingdao Shandong, China
TEL : 86-532-482-2236, 86-532-481-1262 FAX : 86-532-481-1262

SUNSTAR MACHINERY JAKARTA BRANCH

JL. Pelepah Indah Raya Bloc LC 2/2 Kelapa Gading Permai
Jakarta(14250) Indonesia
TEL : 62-21-450-2143, 62-21-4584-0752 FAX : 62-21-4584-0214

SUNSTAR MACHINERY HOCHIMINH BRANCH (VIETNAM)

#E23 Nguyen Thai Binh ST. W. 12 Tan Binh District,
Hochiminh City, Vietnam
TEL : 84-8-811-4141 FAX : 84-8-811-4588

SUNSTAR MACHINERY HANOI BRANCH (VIETNAM)

19 Son Tay. W. Dien Bien Ba Dinh Dist., Hanoi, Vietnam
TEL : 84-4-734-0268 FAX : 84-4-734-0278

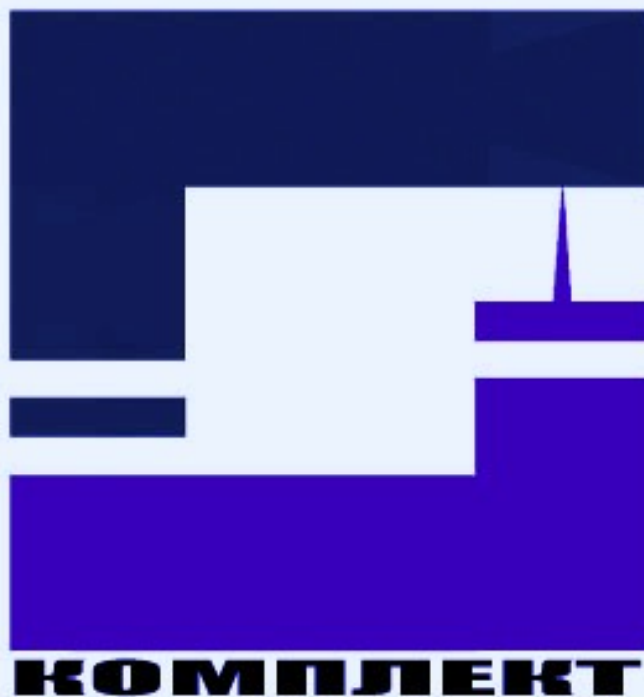
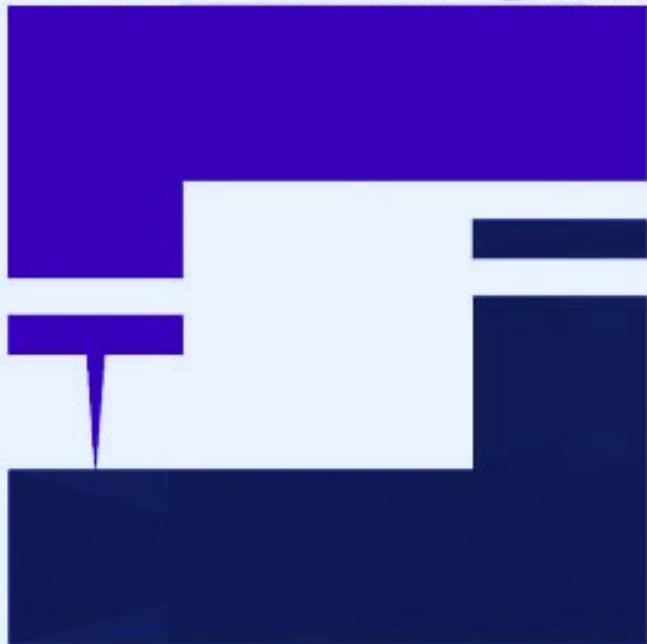
WEB-SITE

<http://www.sunstar.co.kr>

E-MAIL

sunstar@sunstar.co.kr
swf@sunstar.co.kr
fortuna@sunstar.co.kr

ШВЕЙПРОМ



КОМПЛЕКТ

Данная информация для
Вас предоставлена
ООО "ШВЕЙПРОМКОМПЛЕКТ"
т/ф (499) 2592598 г. Москва
www.shveiprom.com
2592598@mail.ru